



Runner Path

Water spigot

Trash Dumpster onsite.  
OK to use

Start Line Area  
See Next Page

Parking

A-Frame w/ arrow  
signs on both sides



Photo crew. Cocodona backdrop by Aravaipa

Gene + Fire Ext

Moon light + T-Post + ratchet. **More light to light arch?**

10x10 Aravaipa. Timing & PA. 3 walls. 2 tables.

Big Truss Arch (4)T-Posts. 2 Cocodona banners @ top  
(12) Barricade for chute. Timing system.

Aravaipa Scrim the base of the arch + Chute

Banners – (2) Aravaipa, (2)SNB, (2) Tailwind, (4)  
**Speedland, (2)Kahtoola**

Feather banners – (4) Aravaipa, (4) **Speedland, (4)**  
**Naak**

#### Tents

1. Wander Project
2. Speedland
3. Naak
4. UltrAspire
5. Kahtoola
6. Satisfy / HydraPak
- 7.

Trash (clear plastic liner) &  
Recycle (huge paper bags)

HQ & Merch (2)20'x20's. Reg banner

Check-in Feather Flag

(8)42"stakes+8 ratchets. 4Walls(2solid+2window)

(8) 6' tables. (6) chairs.

50' string light + 5 bungee balls.

Compost bucket for food waste

10x10 Aravaipa. Food.

2 tables. 4 stakes. 1ClipLight

1 Tailwind igloo + 1 water igloo

Gene  
+ Fire  
Ext

Camping

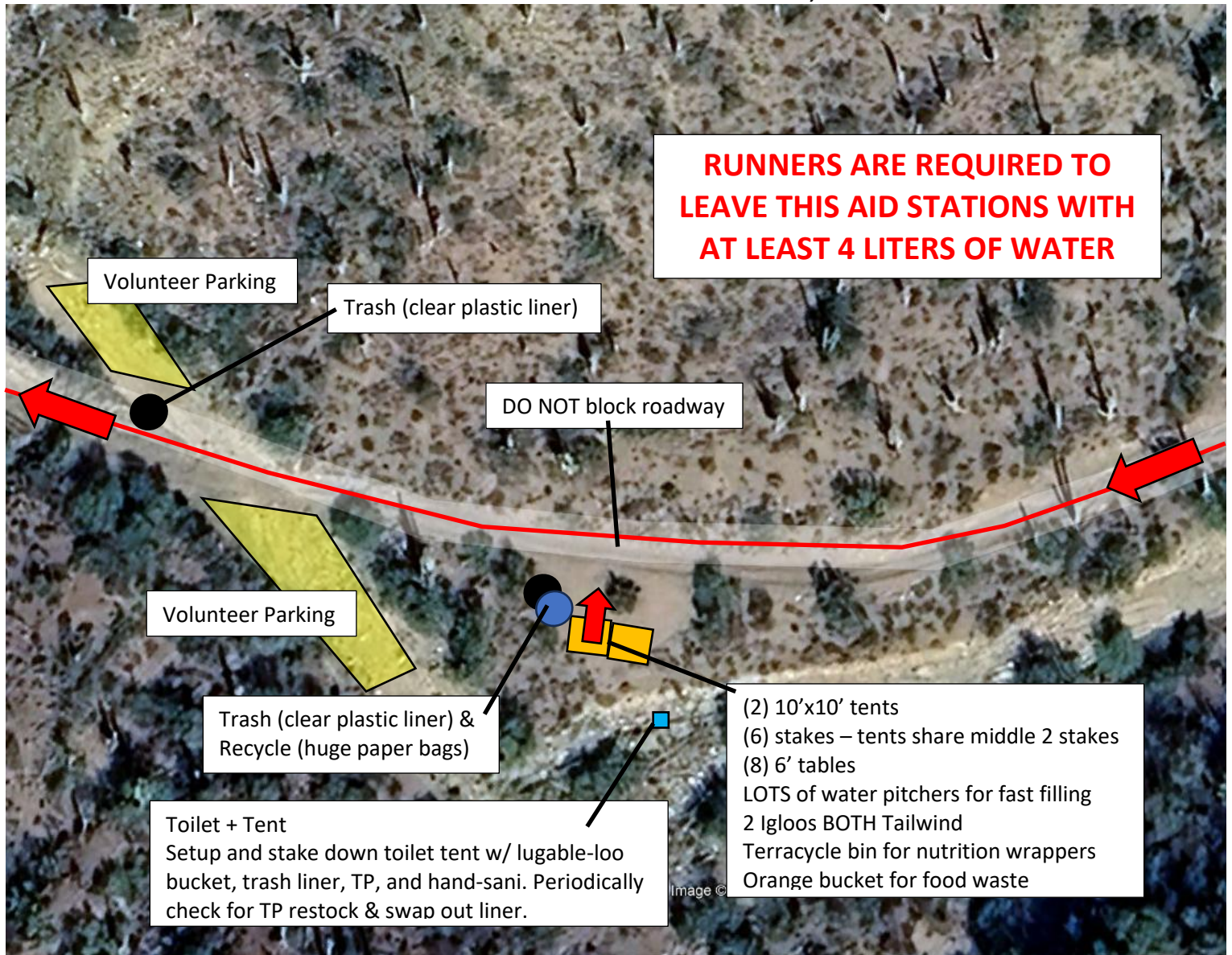
Trash (clear plastic liner) &  
Recycle (huge paper bags)

Food  
Trucks

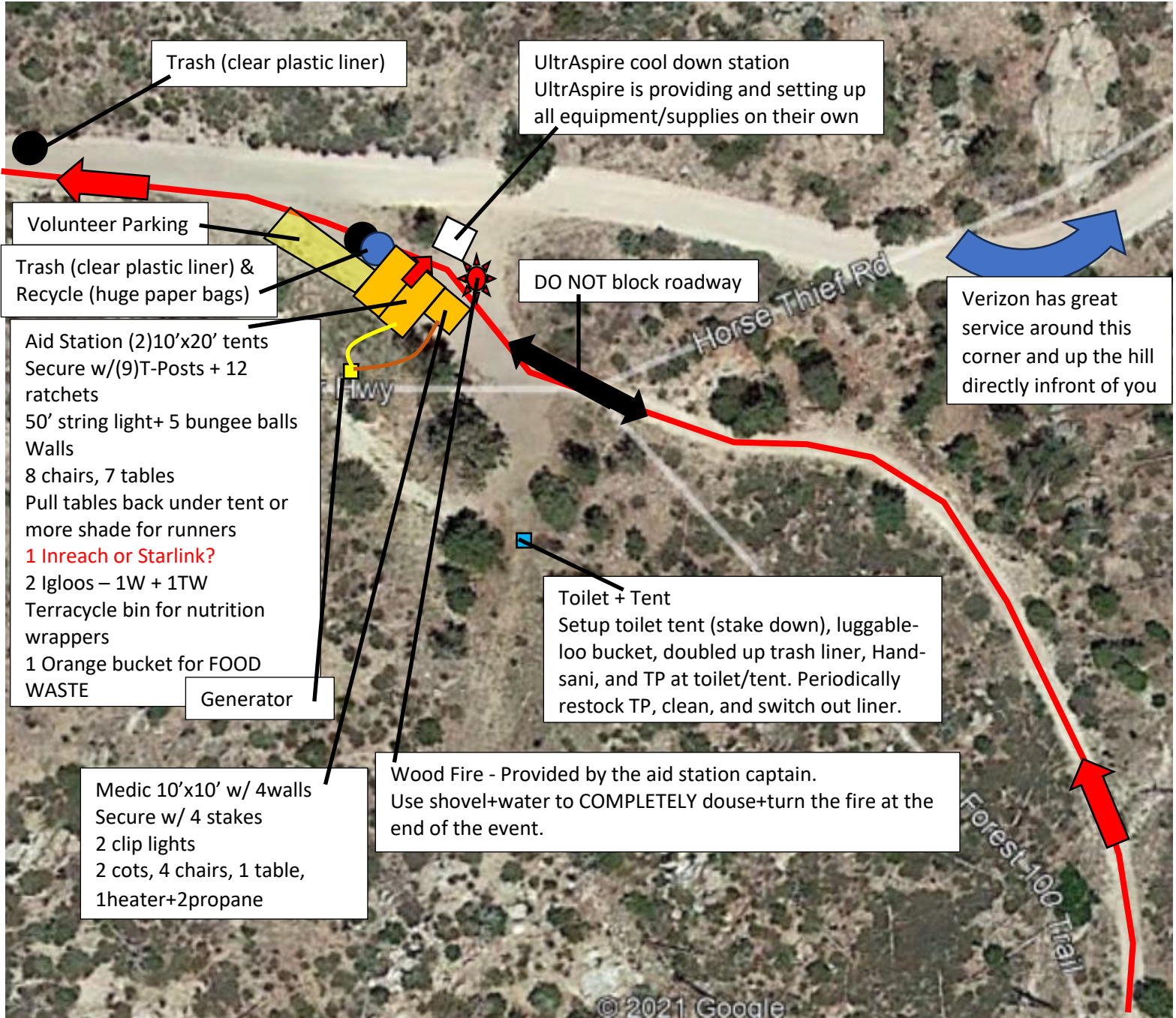
Portbs

Parking

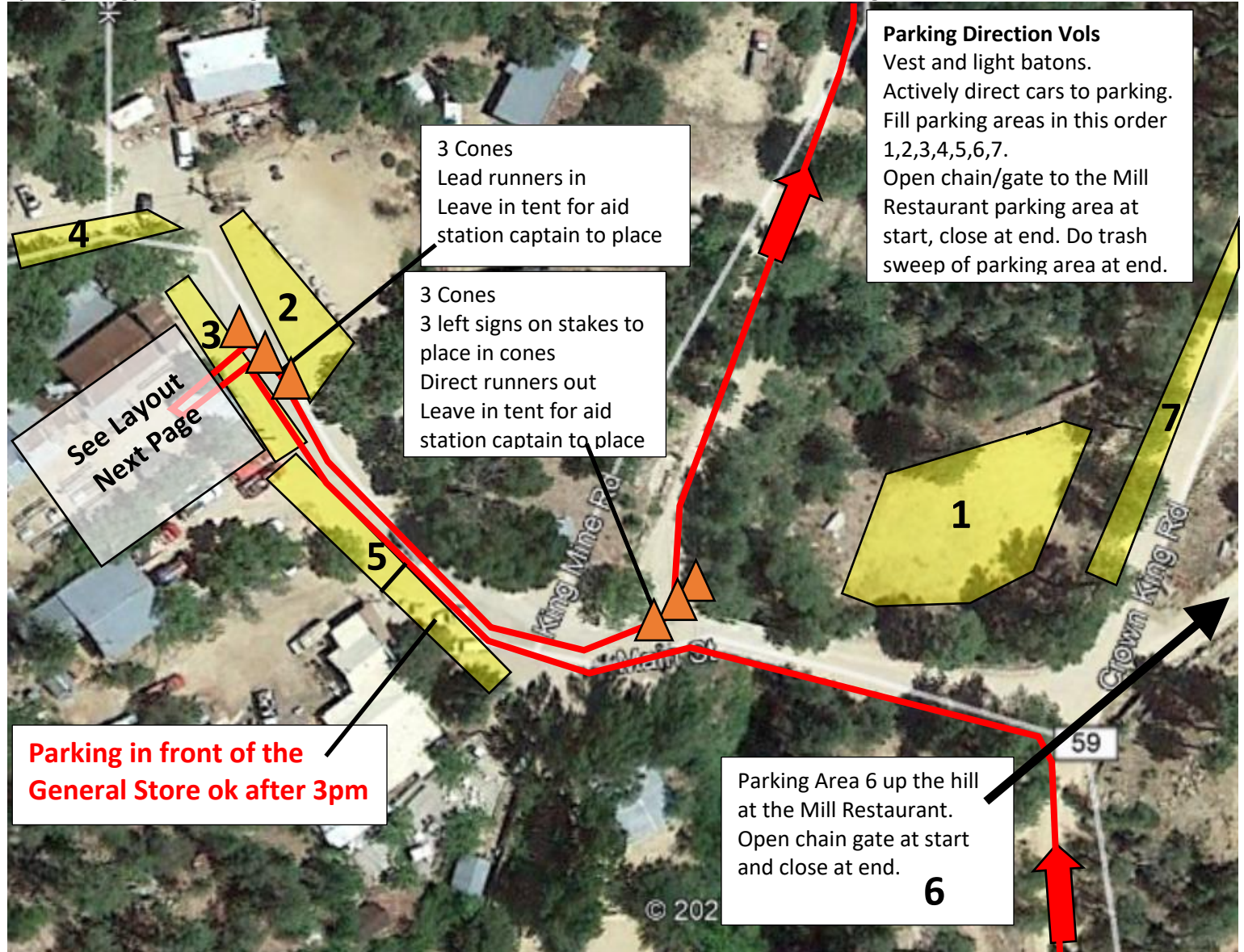
Start/Finish Truck,  
Drop Bag Truck, and  
Drop Bag Banner on  
(2)T-Posts. White  
duct tape and  
marker.











### Crown King Saloon

They provide pulled pork sandwiches & black bean burgers (free for runners & vols) in chaffing dishes in Saloon. They keep track and Aravaipa will pay after the event. Saloon closes at 11:55pm, get enough sandwiches at this point to cover all the remaining runners. Indoor toilets.

Water spigot outside has bad taste so pull water from inside Saloon to provide propane heaters and propane. Place throughout outdoor area.

NO TRASH DUMPSTER  
Owner Lorrie (775)772-8637

Tailwind slushies.  
Everything provided  
by Tailwind.

**VOLUNTEERS  
PARK AT MILL  
RESTURANT**

Place in a good spot  
10'x10' Tent for shade  
2 walls. Secure w/ 4 stakes.

Adjust location as needed  
20'x30' tent Aid Station  
Walls to enclose 10'x20' area for  
medics. Medics get:  
Heater+1propane, 2cots, 4chairs,  
and 1table.  
(10)T-Posts + 10ratchet straps  
100' String light w/ 10 bungee balls  
7Tables  
Water dunk station w/ igloo/ice,  
bucket+water+some-ice, sponges  
2 Igloos – 1W + 1 TW  
Terracycle bin for nutrition wrappers  
Orange bucket for food waste

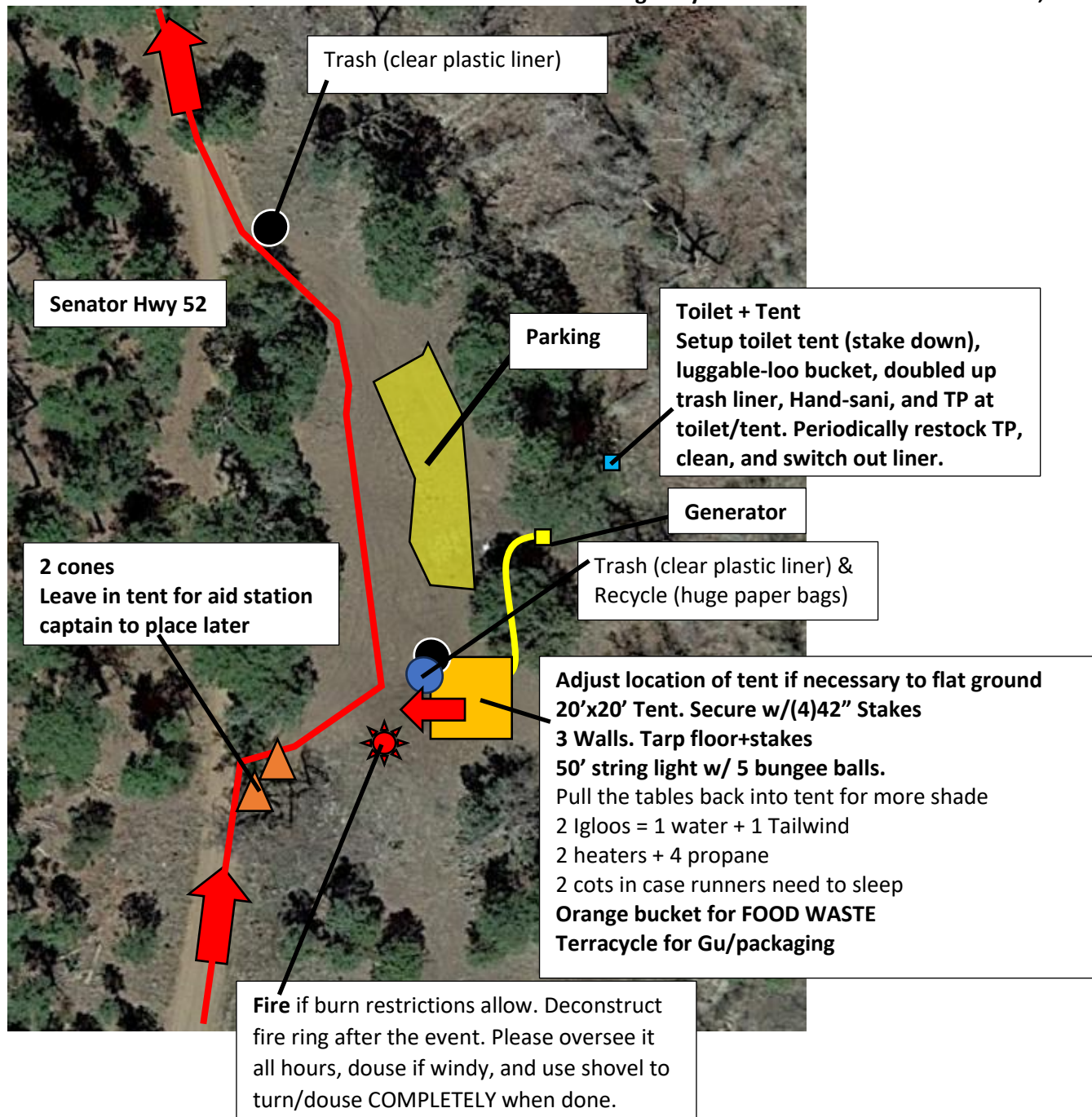
Trash (clear plastic liner) &  
Recycle (huge paper bags)

Drop Bags  
Do NOT sort into "used" pile.  
All will go to Fort Tuthill  
when aid station closes.

Trash (clear plastic liner) &  
Recycle (huge paper bags)







## Kamp Kipa Aid Station

Poland Rd (FR261)

34.41311, -112.41629

Aid Station setup in Dining Hall  
Full kitchen  
Setup tables and chairs in mess hall  
Setup power strips in Dining Hall  
2 igloos = 1 water + 1 Tailwind  
Trash clear plastic liners  
Recycle huge paper bags  
Teracycle for nutrition wrappers

### IF WATER IS NOT TURNED ON

#### Toilet + Tent

Setup toilet tent (stake down),  
luggable-loo bucket, doubled up  
trash liner, Hand-sani, and TP at  
toilet/tent. Periodically restock TP,  
clean, and switch out liner.

Cabins for runners to sleep  
Coordinate w/ Caretaker

Runner Path

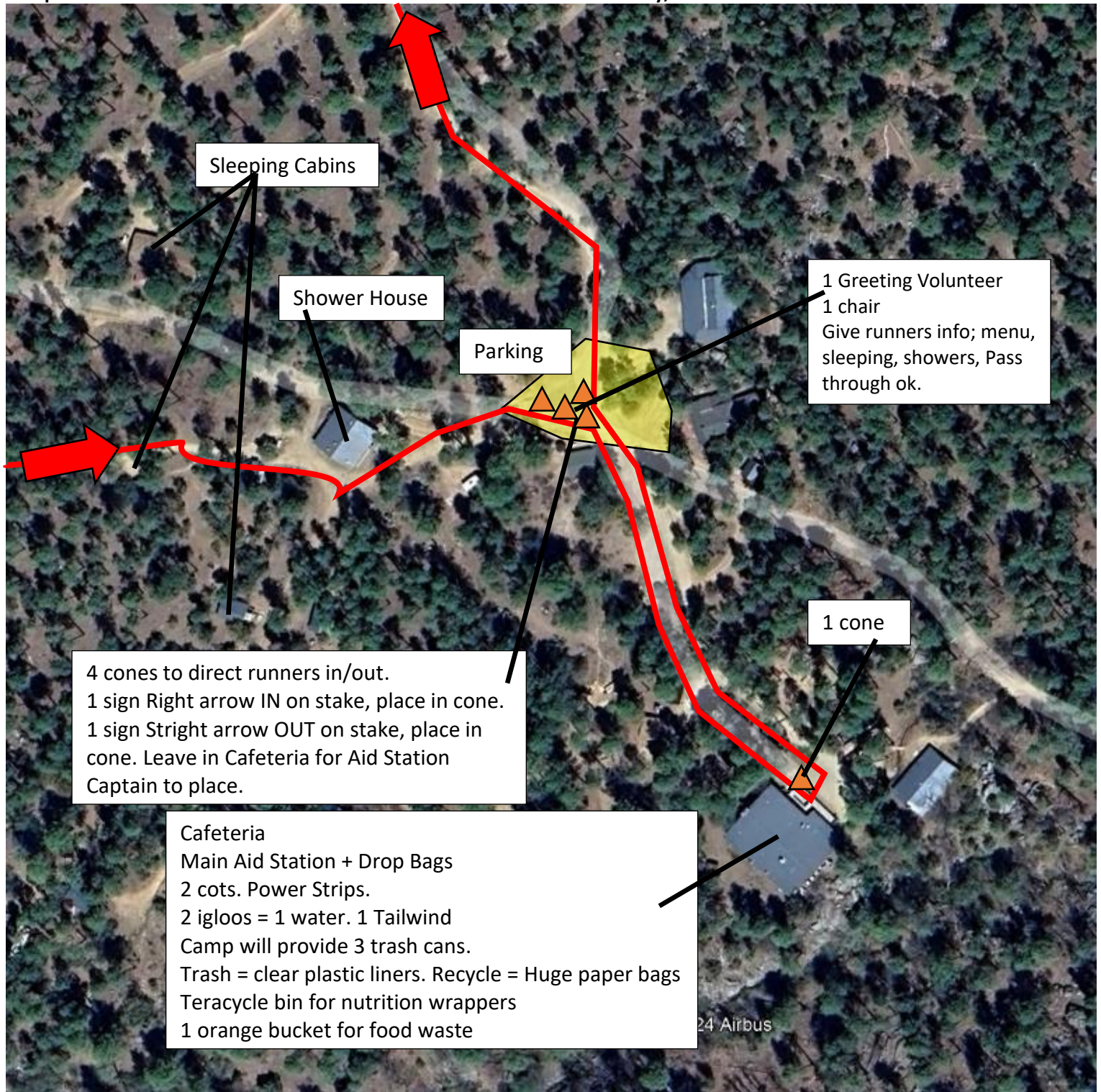
4 cones to lead runners in/out.  
1 sign Right arrow IN on stake place in cone.  
1 sign Right arrow OUT on stake place in cone.  
Leave in Dining Hall for Aid Station Captain to place.

Poland Rd / SR261

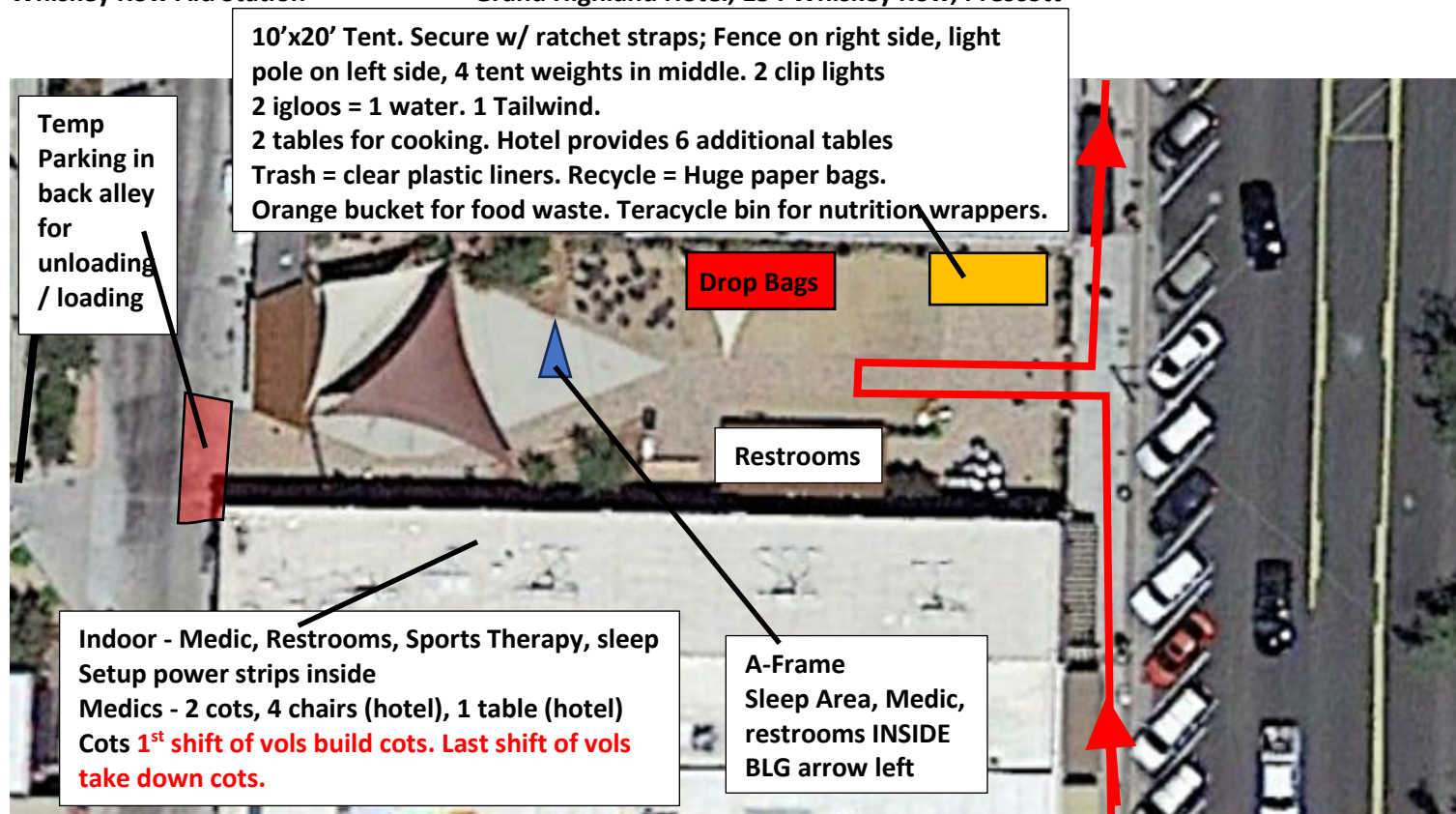
### Course Setup Crew Notes:

-Gate code is 3120. Close gate behind you and drive into the property and all the way down to the bottom of the hill to the main big building. There is a key lock box (code 12345) at the back door of the building. Camp manager is Tom (906)360-1120.



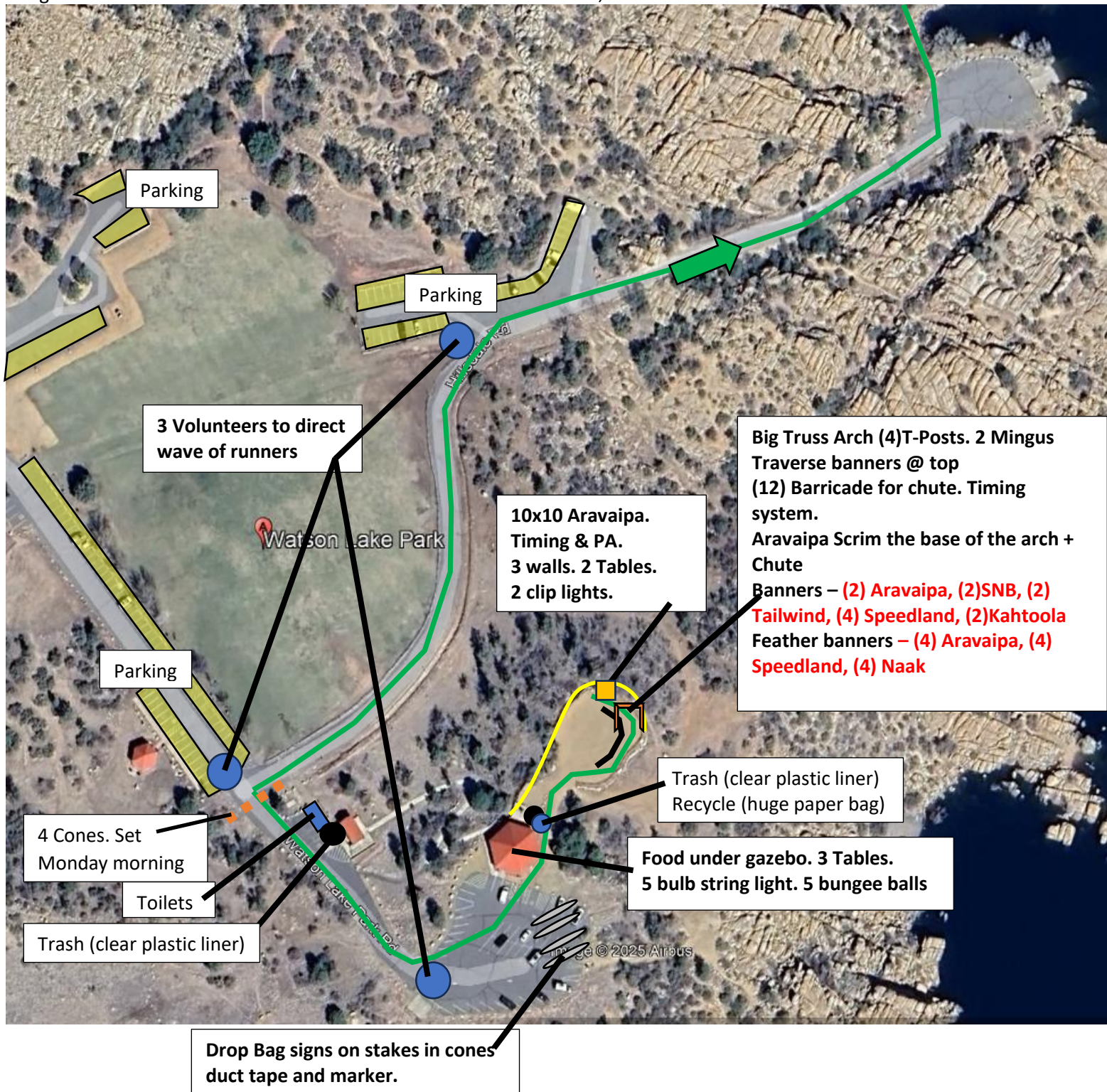




**Notes:**

- Hotel point of contact is Natasha or front desk
- COTS** – 1<sup>st</sup> shift of vols build cots. Last shift of vols take down cots. Space out cots indoors.
- POWER/WATER** – Work with hotel for access to power and water in courtyard. Have them setup heaters in courtyard.
- LIGHTS/MUSIC** – Courtyard lights and sound system can be turned on in the courtyard. Work with the hotel for this
- GATE** – Open Courtyard gate and leave open for entire event
- DUMPSTERS (TRASH & RECYCLE)** – We have the use of onsite trash and recycle dumpsters
- RESTROOM CLEANING** – Make sure that the hotel cleans & restock TP at restrooms when they open in the morning, throughout the day, and at 4:30pm just before the front desk closes. You may need to clean / restock TP through the night. Check restrooms periodically.
- HOTEL WILL PROVIDE** – (6) 6' Tables, trash cans, and propane heaters + propane tanks. Place heaters if cold.
- PIZZA** – provided by the Grumpy Sicilian 6 doors to the North. Coordinate adjustments to pizza delivery schedule with the shop at (928)277-0726. No delivery during night hours between 7pm-11am – we need to pick up these hours. 75% paid in advance. Have them call RD Steve at the end of the event for balance of payment. Order some w/o cheese.
- PROPANE** – Use one of the hotel's 20# propane tanks for cooking if needed.
- SECURITY** – Security guard between 10pm to 2am to deal w/ rowdy bar crowds



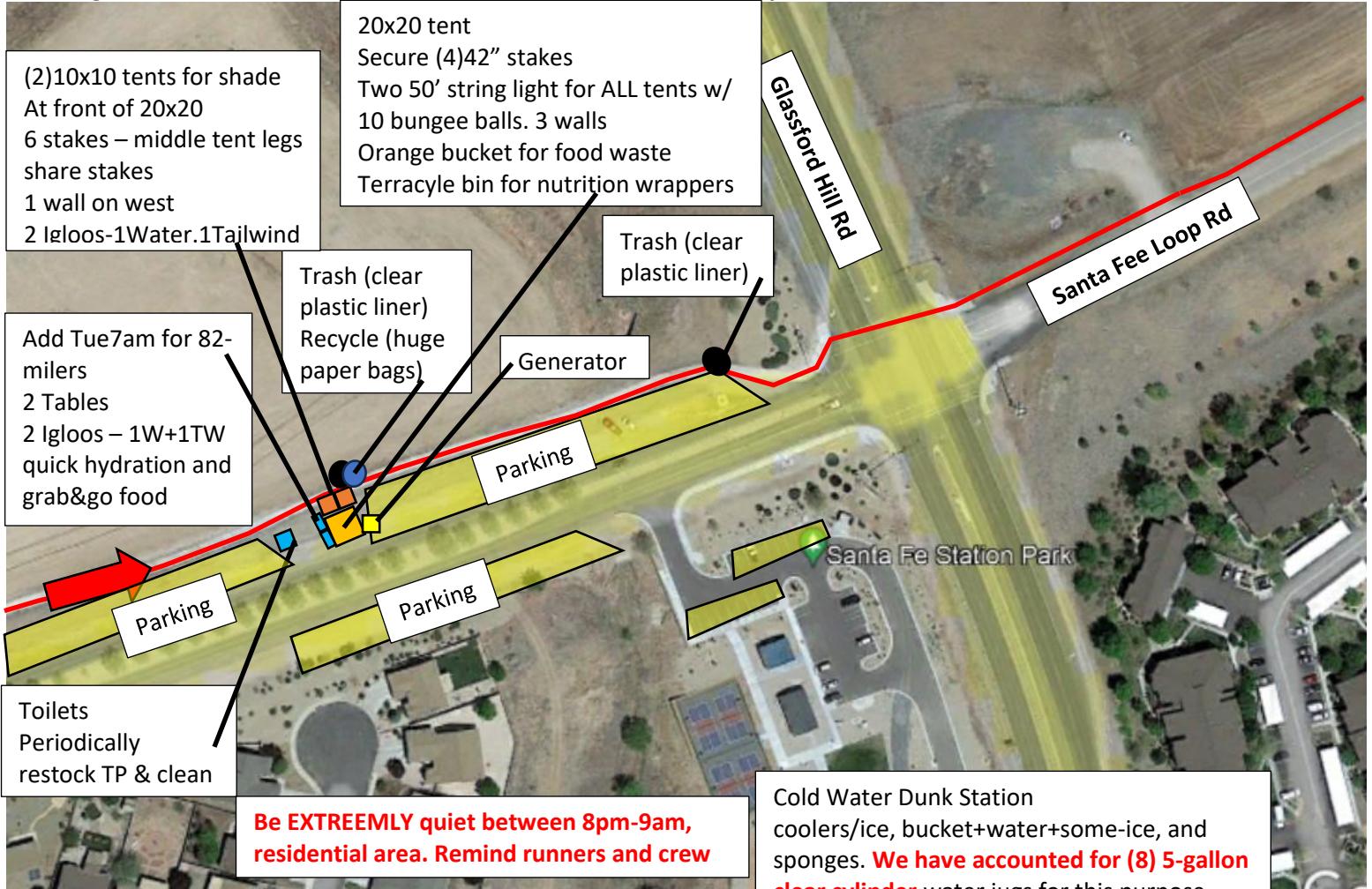




Iron King Aid Station

5731 E Sante Fe Loop Rd, Prescott Valley, AZ

34.61401, -112.34775

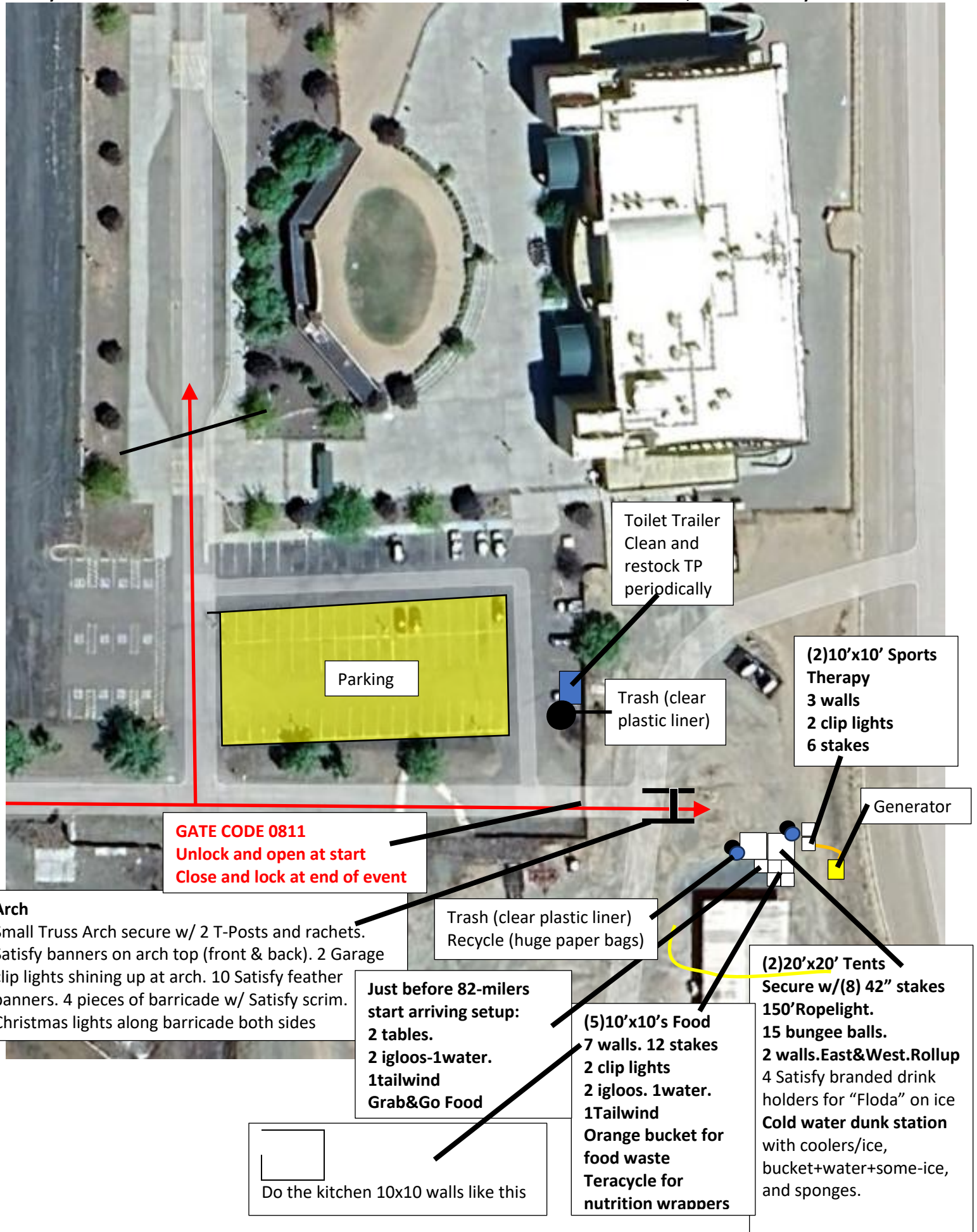




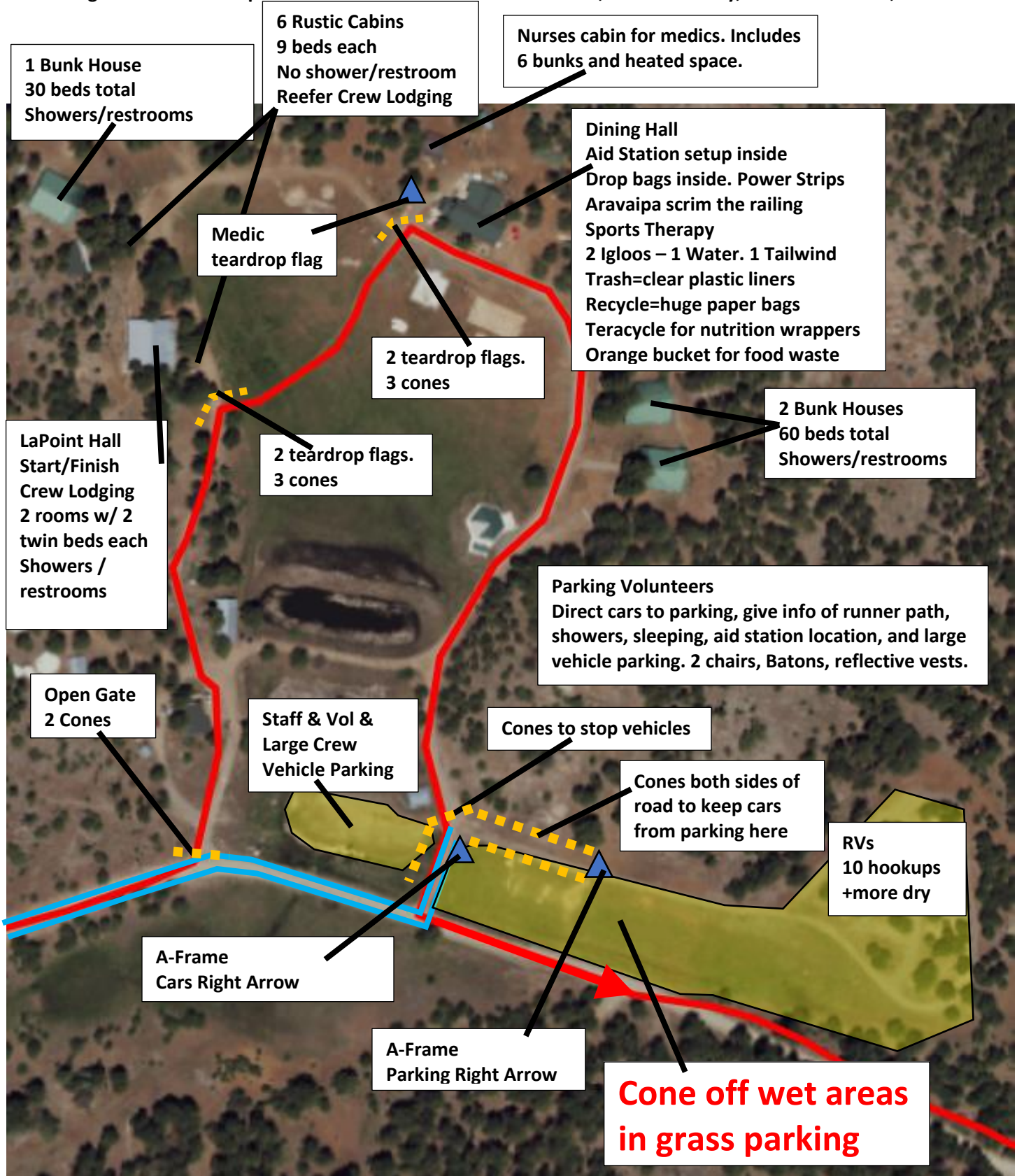


Main entrance of Arizona Downs

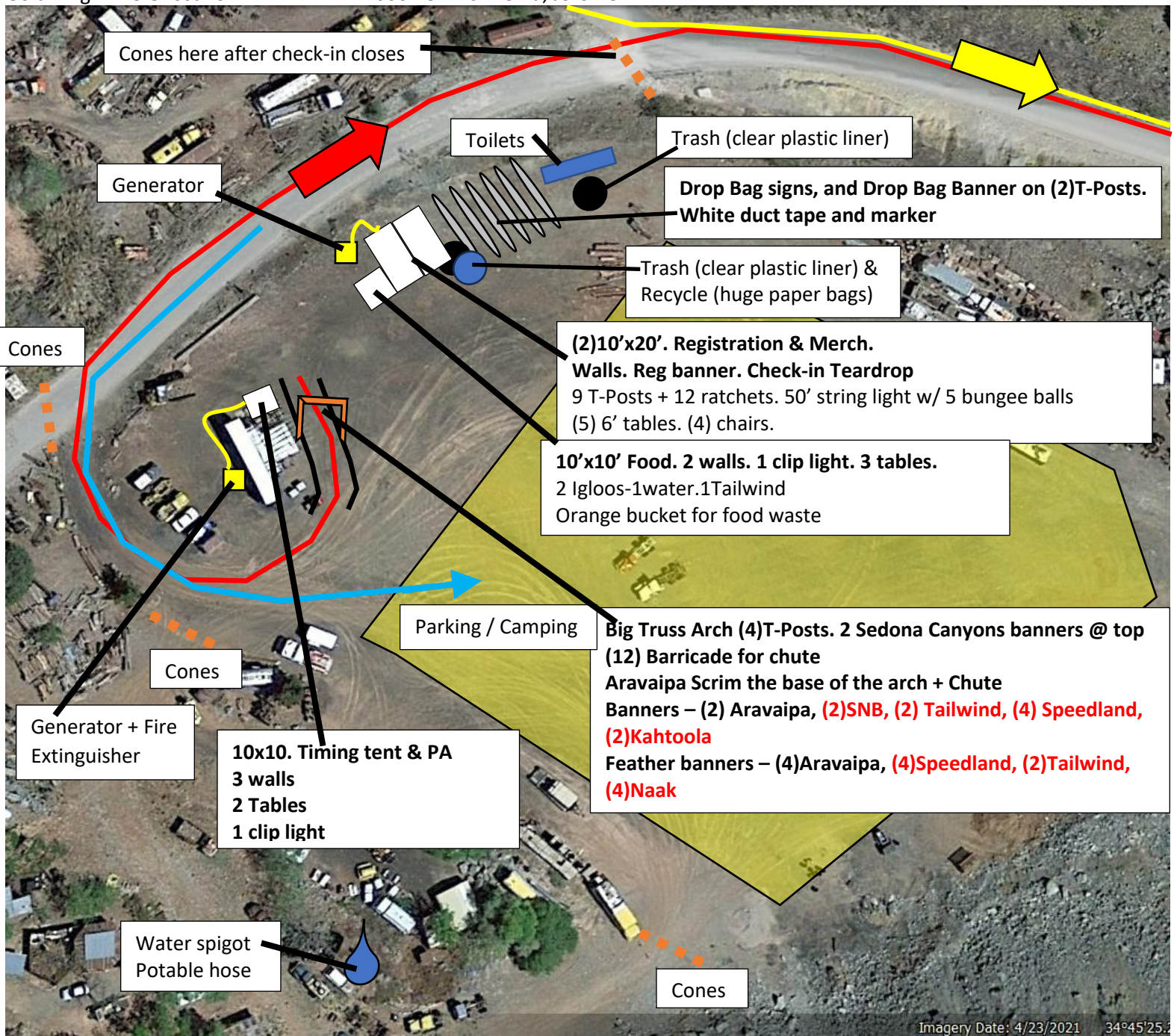
Locate Aid Station here – See next page for detail





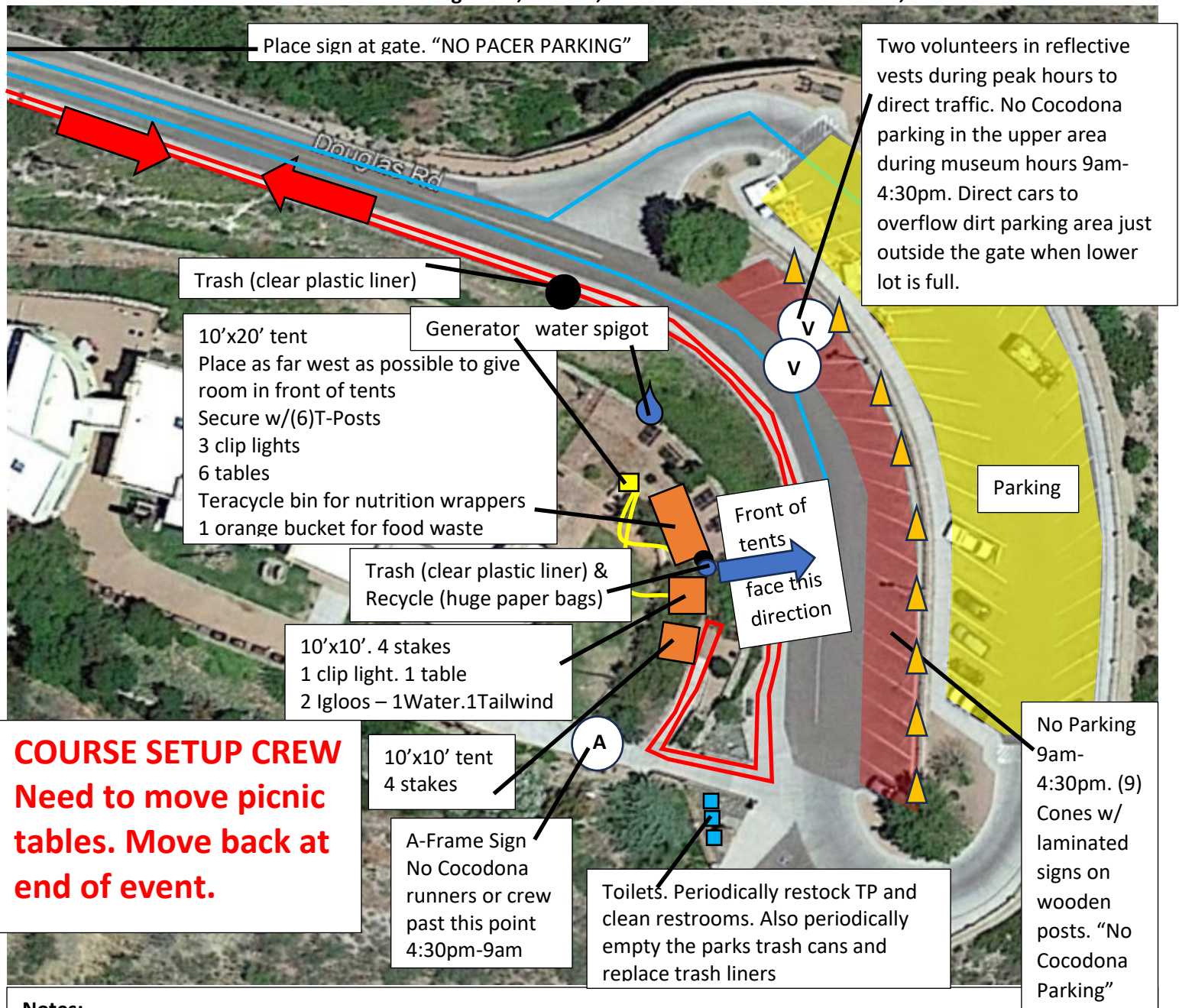






Dumpster onsite is ok for us to use.



**Notes:**

- State Park will give you a radio for communication
- The building will be closed from 4:30pm-9am but there will still be a ranger onsite with a radio
- Please allow park staff to eat from the aid station
- Volunteers park outside park gate in the overflow dirt parking lot
- Main state park contact Marc (928)848-8180. Secondary contact Eric (907)206-9047

Dead Horse Ranch State Park

675 Dead Horse Ranch Rd, Cottonwood (Group Camping Area)

4 cones. 1 Sign Right IN.  
1 Sign Right OUT. Placed  
on stakes in cones.

10'x20'. Secure w/(6)T-Posts.  
2 clip lights. 3 walls  
4 Igloos. 2Water. 2Tailwind

(14)sleeper tents w/ 2 cots each  
**First shift of vols setup. Last  
shift takes down. Start when #  
of runners slows down, don't  
wait until the end.**

Volunteer to direct  
traffic w/ vest & baton

10'x20' Med. Secured  
Secure w/(6)T-  
Posts.  
2 clip lights.  
Heater+Propane  
2 cots, 4 chairs  
1 table

Drop Bags &  
light w/ T-Post  
and ratchet

Pavilion  
Cold Water dunk station with  
coolers/ice, bucket+water+some-  
ice, and sponges

Generator  
Only use if pavilion power goes out  
**20' away from anything flammable**  
**Place ext cords so they are not a  
tripping hazard**

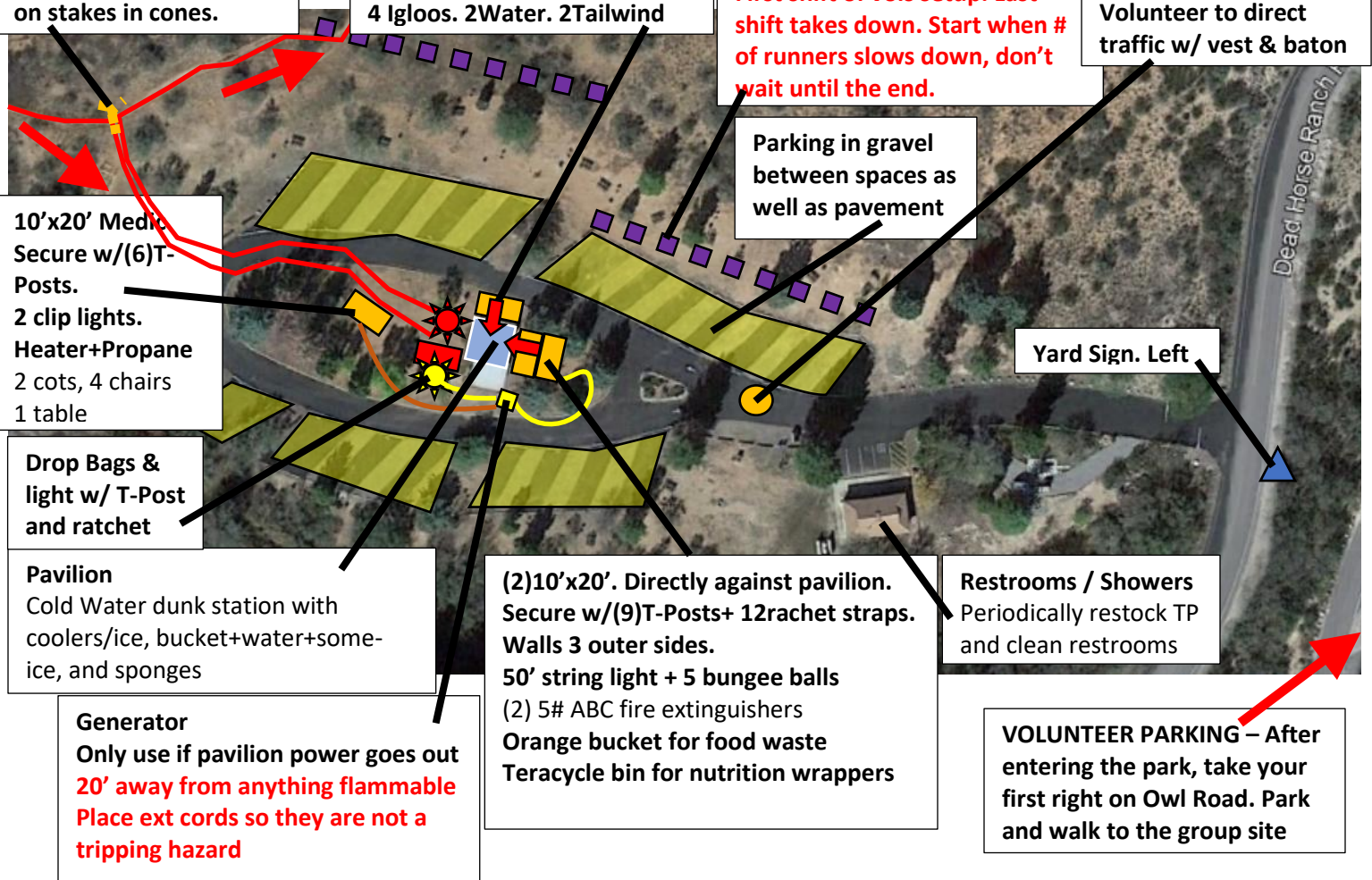
(2)10'x20'. Directly against pavilion.  
Secure w/(9)T-Posts+ 12ratchet straps.  
Walls 3 outer sides.  
50' string light + 5 bungee balls  
(2) 5# ABC fire extinguishers  
Orange bucket for food waste  
Teracyle bin for nutrition wrappers

Restrooms / Showers  
Periodically restock TP  
and clean restrooms

**VOLUNTEER PARKING** – After  
entering the park, take your  
first right on Owl Road. Park  
and walk to the group site

Parking in gravel  
between spaces as  
well as pavement

Yard Sign. Left





## COURSE SETUP CREW

**Place a light on the pit toilet somehow**

3 cones to direct runners out. Sign Right on stake place in cone

Restroom  
Periodically restock TP and clean

Trash (clear plastic liner)

Trash (clear plastic liner)

WHEN THE 125-MILERS COME THROUGH  
ADD 2 tables out front for an ADDITIONAL  
3 more Igloos. 2 water. 1 Tailwind  
Grab&go food  
1 more Cold Water dunk stations with coolers/ice, bucket+water+some-ice, and sponges.

(2) 10'x10'. 4 stakes.  
2 clip lights.  
5 walls (2SW, 1NW, 2NE)  
Tarp water to cover sun

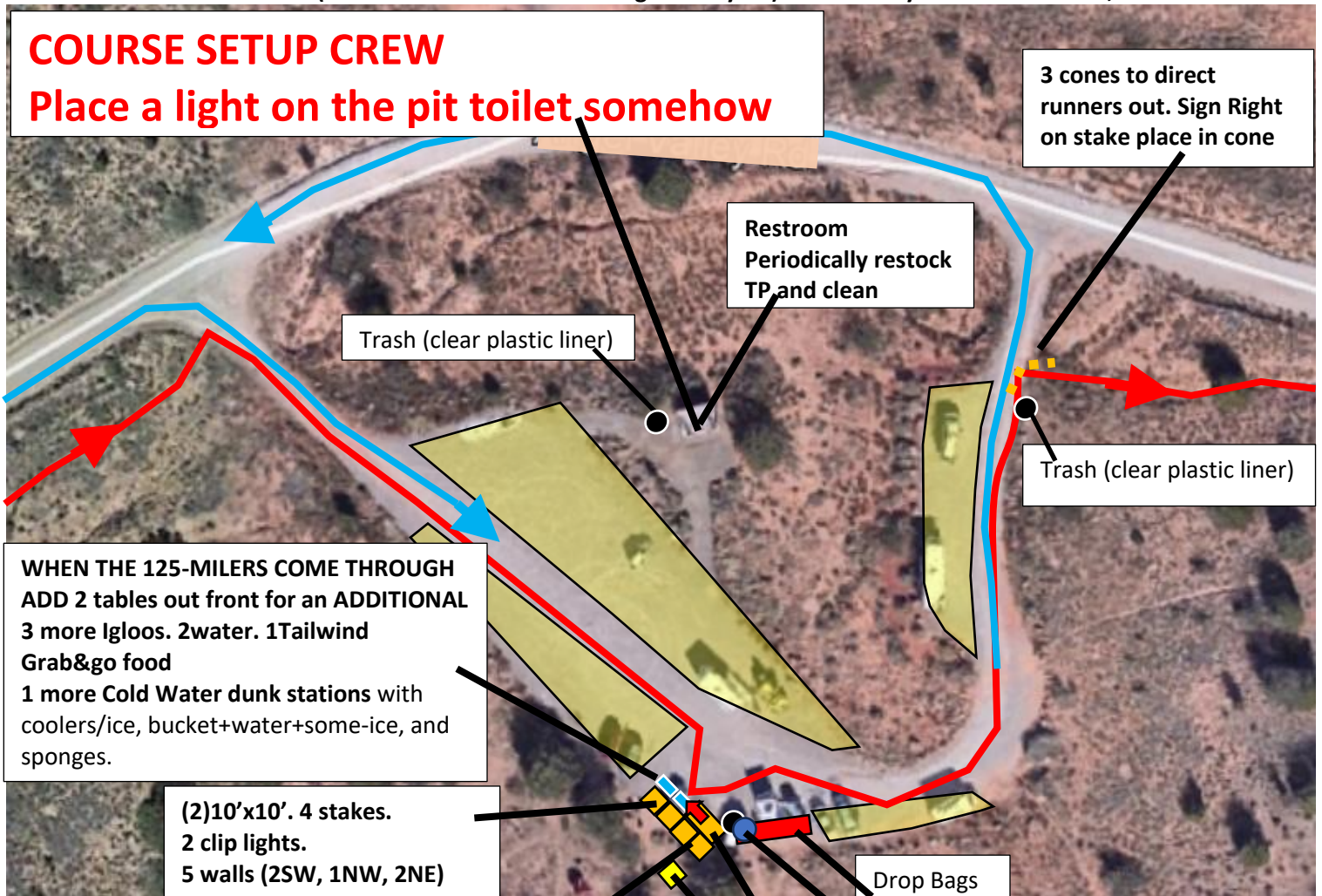
(2) 10'x10'. 6 stakes.  
50' string light w/ 5 bungee balls for the rear (2) 10x10s+front 10'x20'.  
3 walls (2SE, 1SW)  
Orange bucket for food waste  
Teracycle bin for nutrition wrappers

Drop Bags

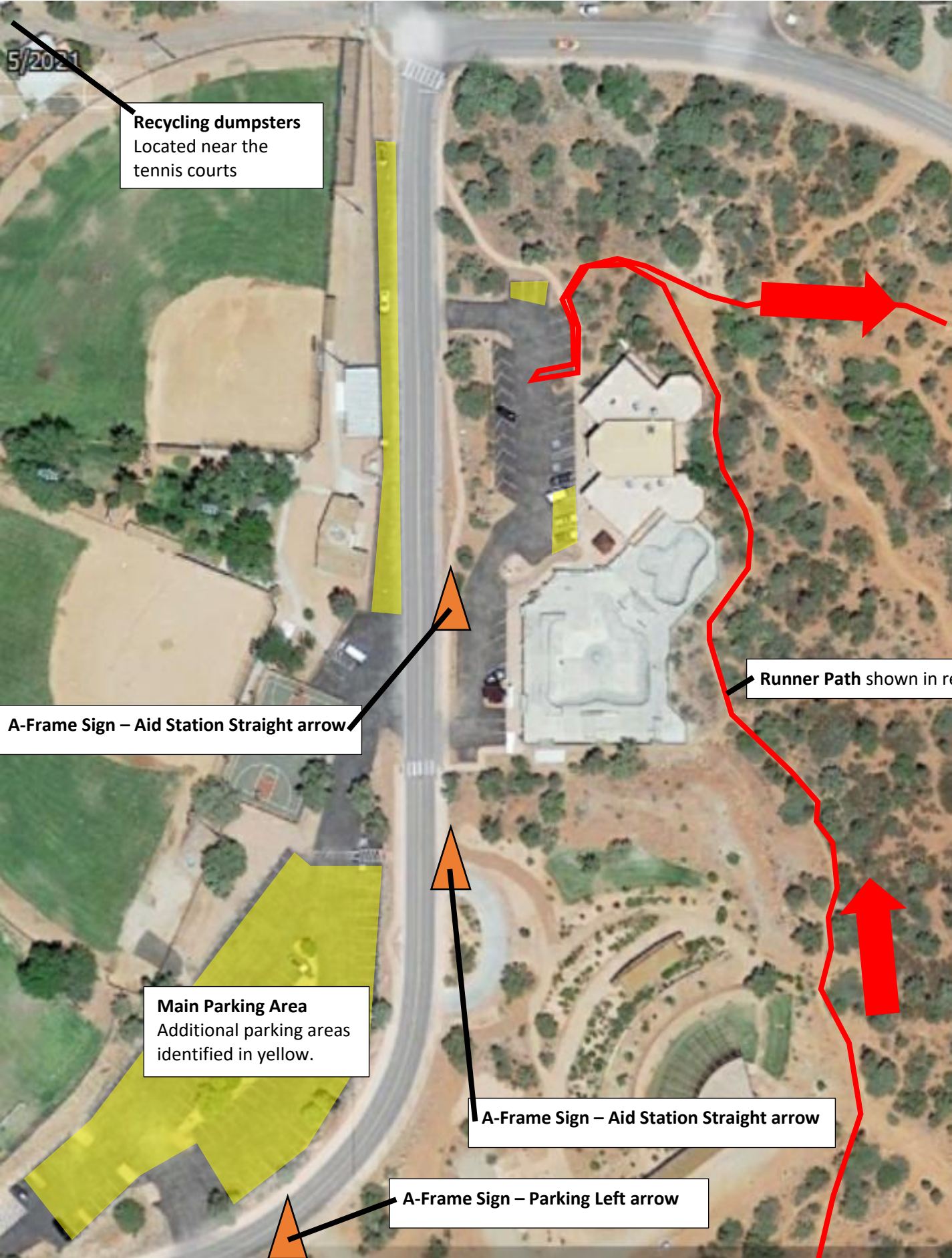
Generator

Trash (clear plastic liner) & Recycle (huge paper bags)

10'x20'. Secure w/ 6 T-Posts + 6 ratchet straps  
Tarp floor along with 2 10x10s behind, stake tarp  
2 Igloos. 1 water. 1 Tailwind.  
1 Cold Water dunk stations with coolers/ice, bucket+water+some-ice, and sponges. **We have accounted for (17) 5-gallon clear cylinder water jugs for this purpose. Don't use more than 17 unless you are SURE you will not run out of drinking water.**  
2 cots in case a runner needs to sleep







**Recycling dumpsters**  
Located near the  
tennis courts

**A-Frame Sign – Aid Station Straight arrow**

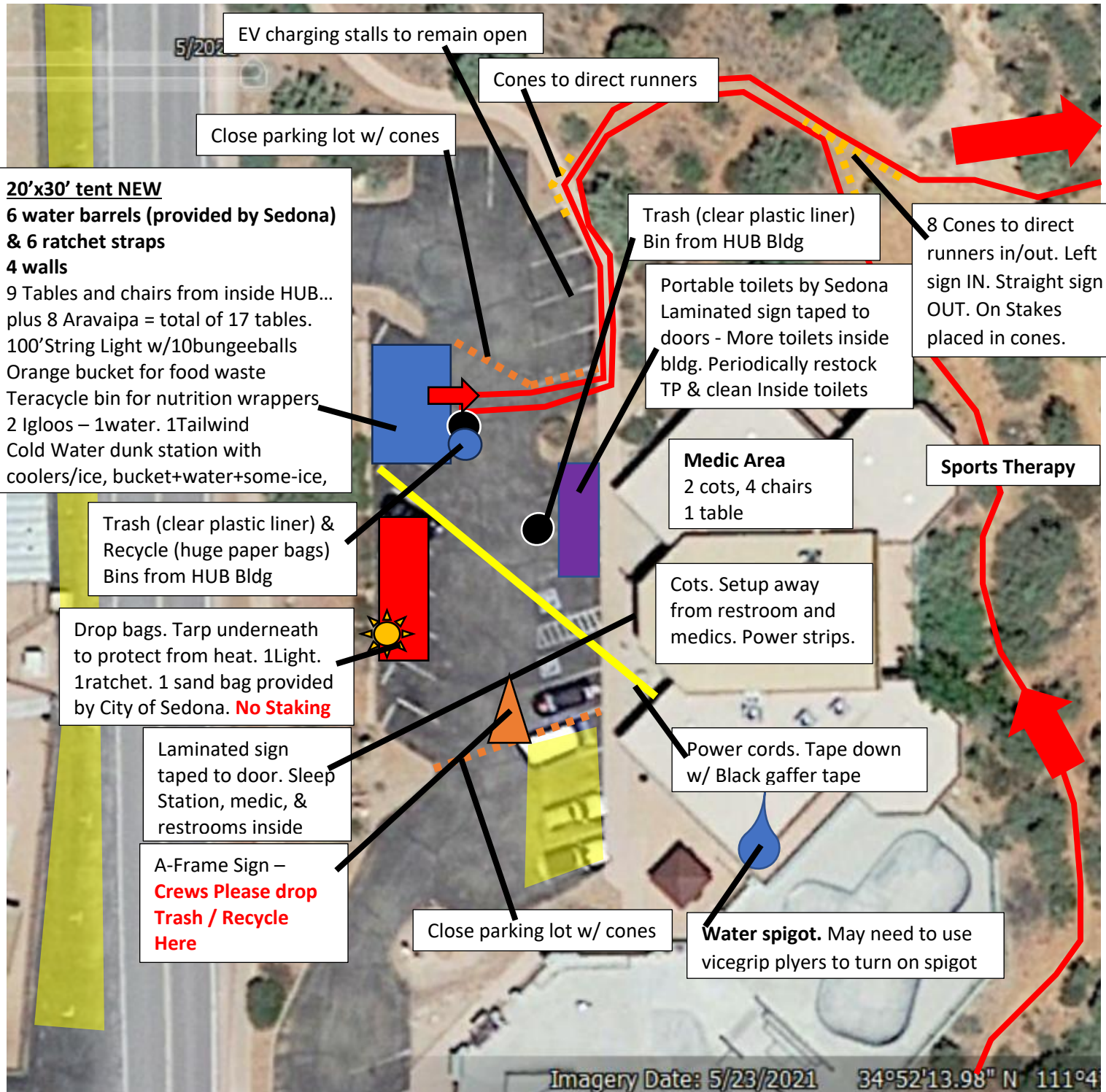
**Main Parking Area**  
Additional parking areas  
identified in yellow.

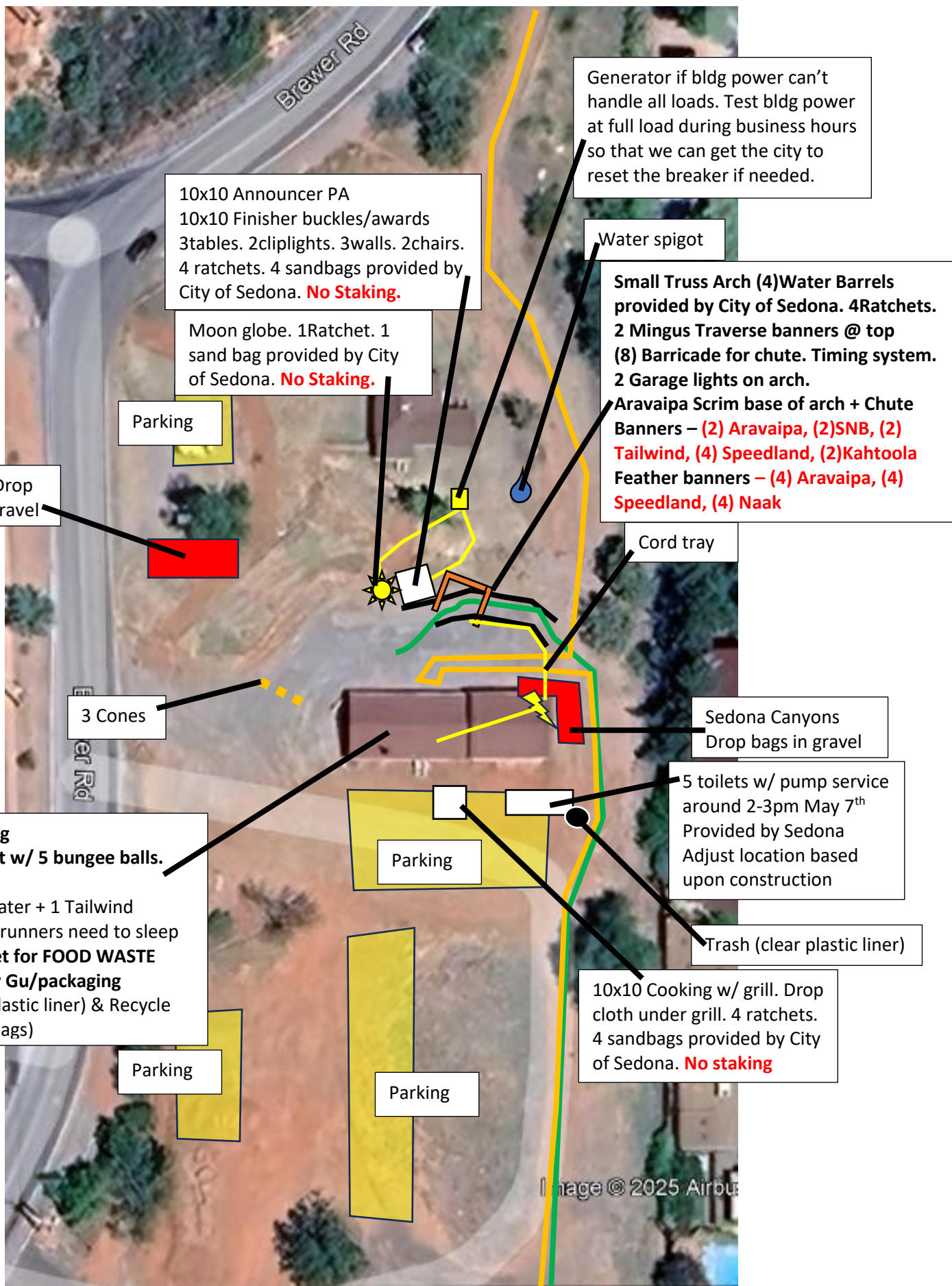
**Runner Path shown in red**

**A-Frame Sign – Aid Station Straight arrow**

**A-Frame Sign – Parking Left arrow**

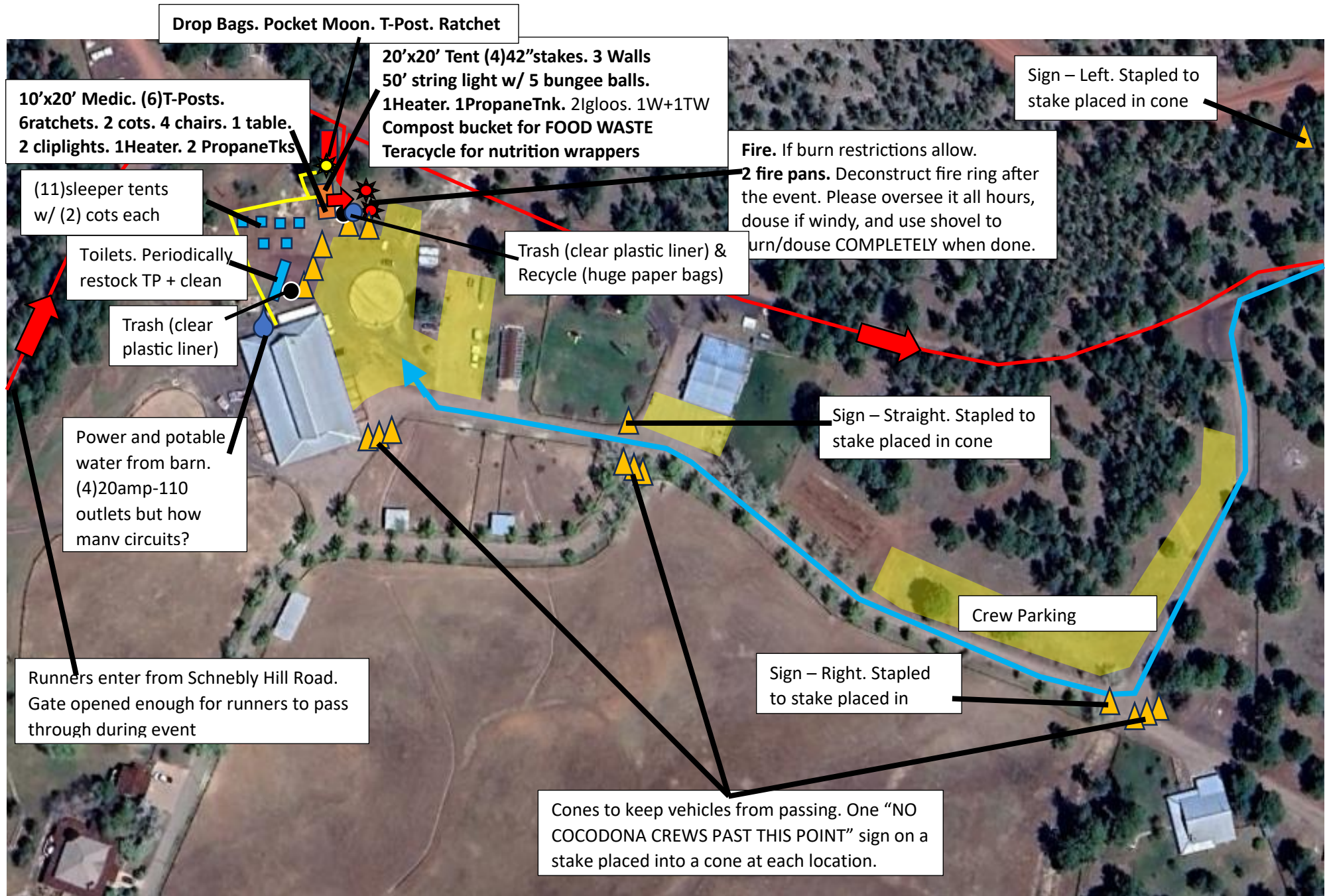








Foxboro Ranch – Cocodona250 Aid Station



**They might be able to provide some electrical cords. Use of dumpster onsite is ok. Move aid station into the barn? Or close to the barn to water and power?**

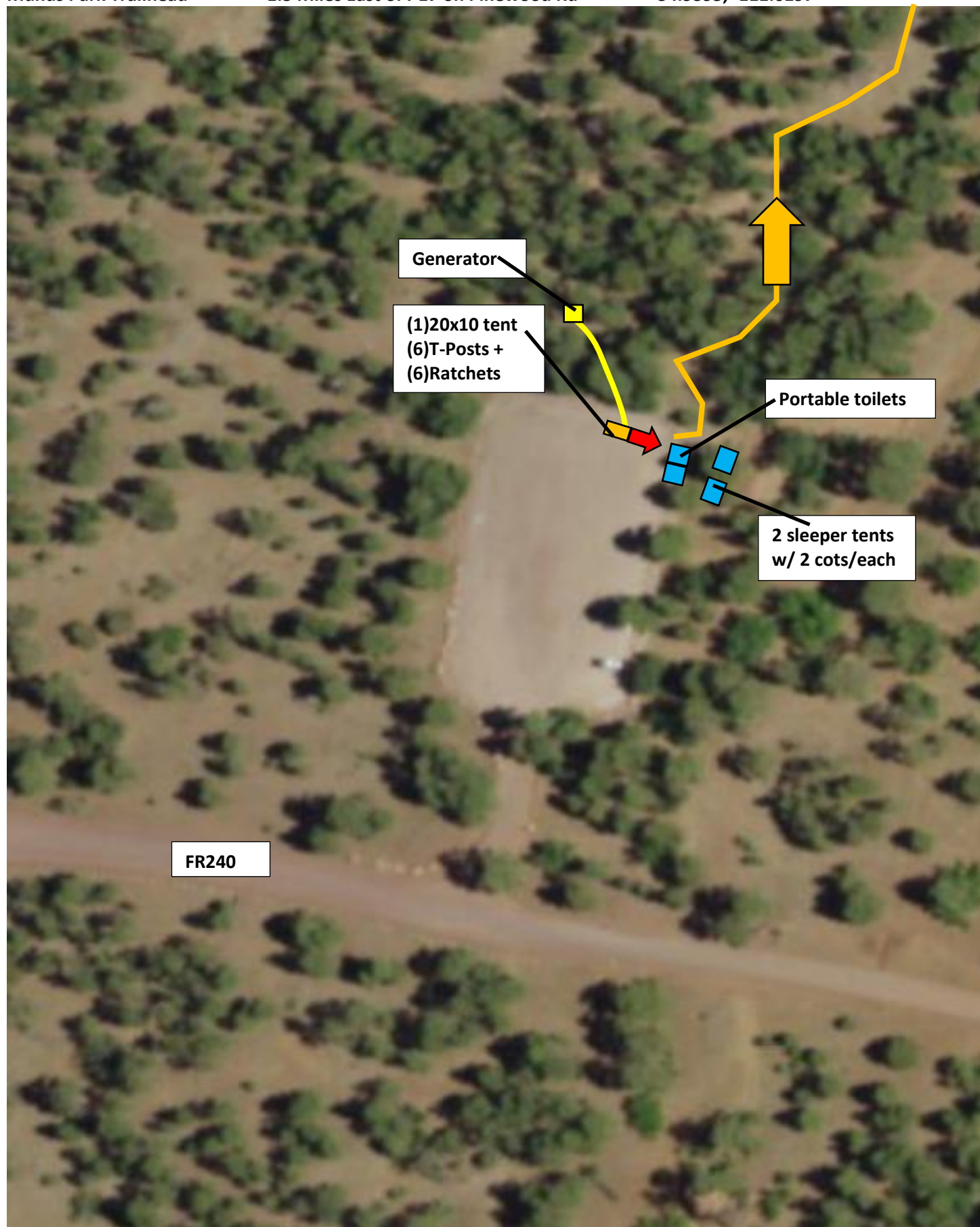


**Sedona Canyons 125 – Restart Location**

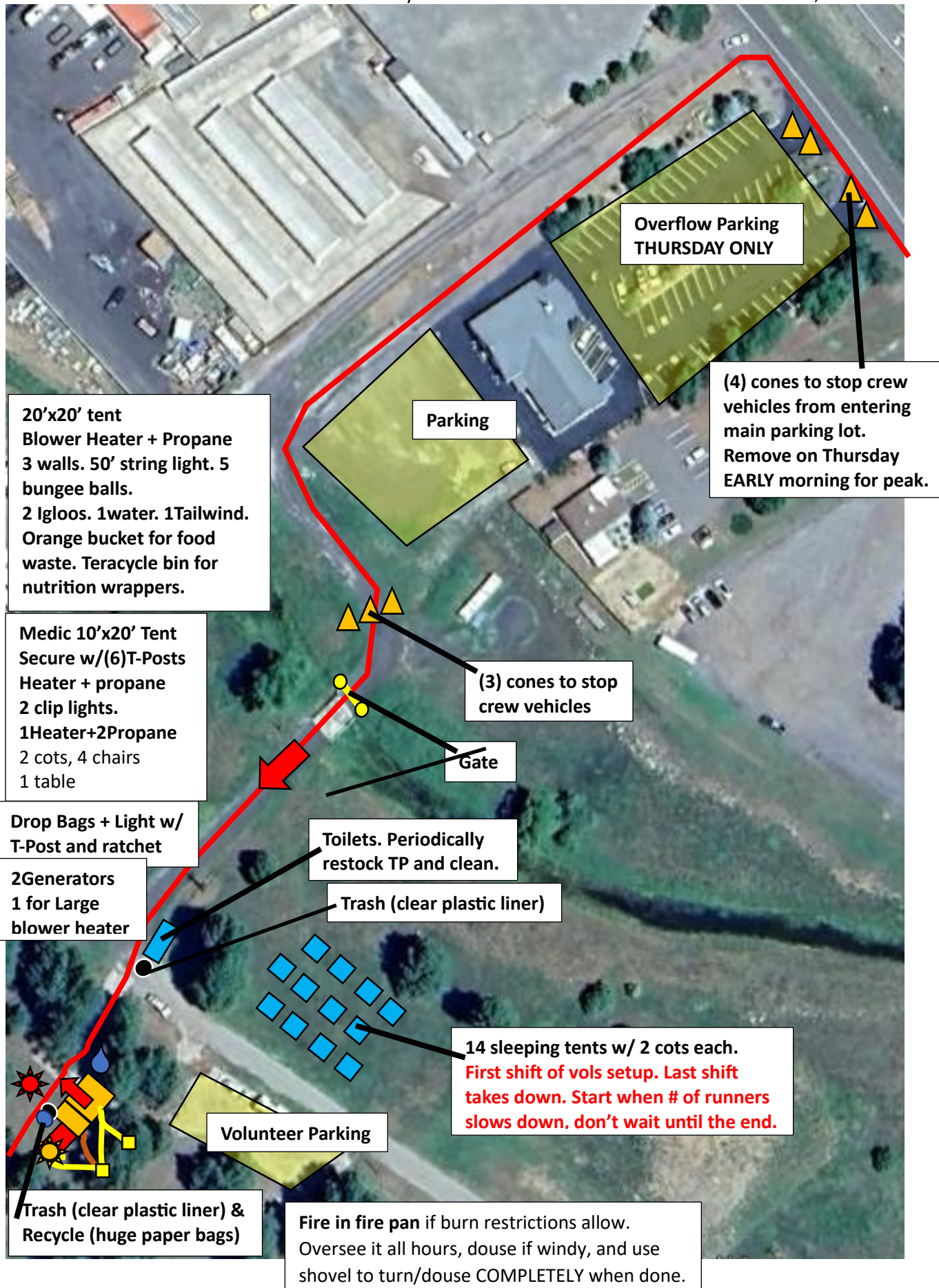
**Munds Park Trailhead**

**1.3 Miles East of I-17 on Pinewood Rd**

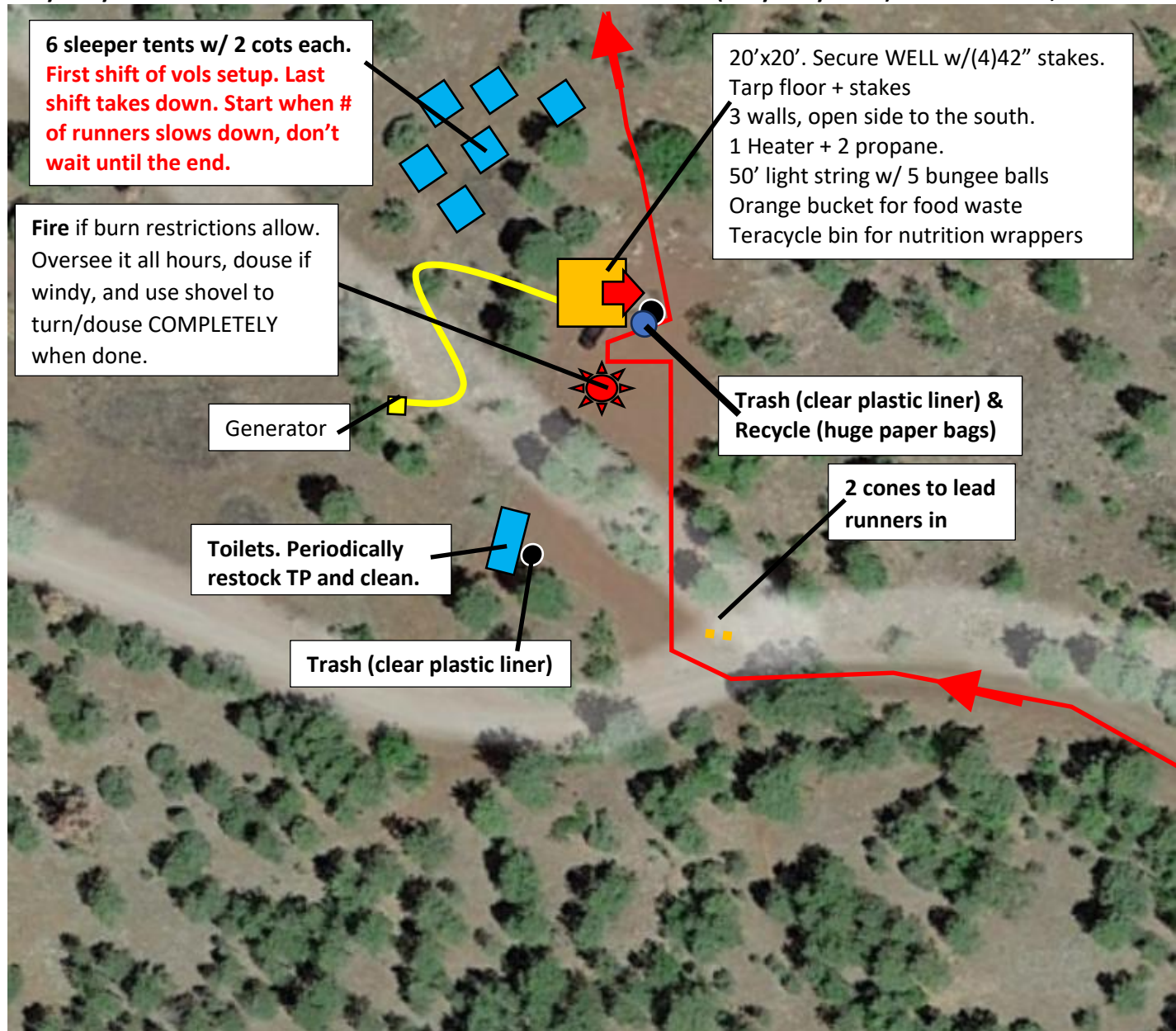
**34.9395, -111.6197**

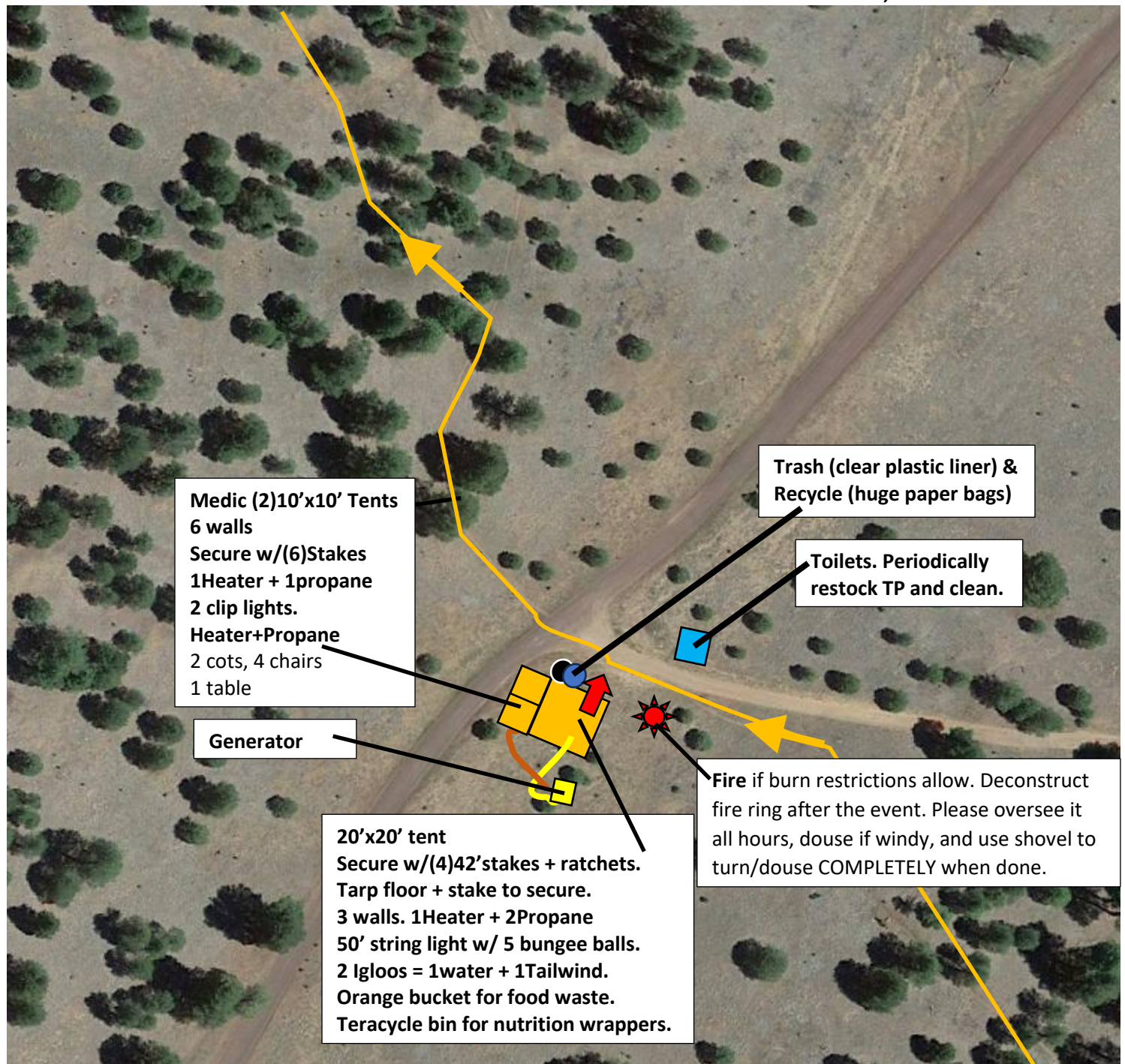








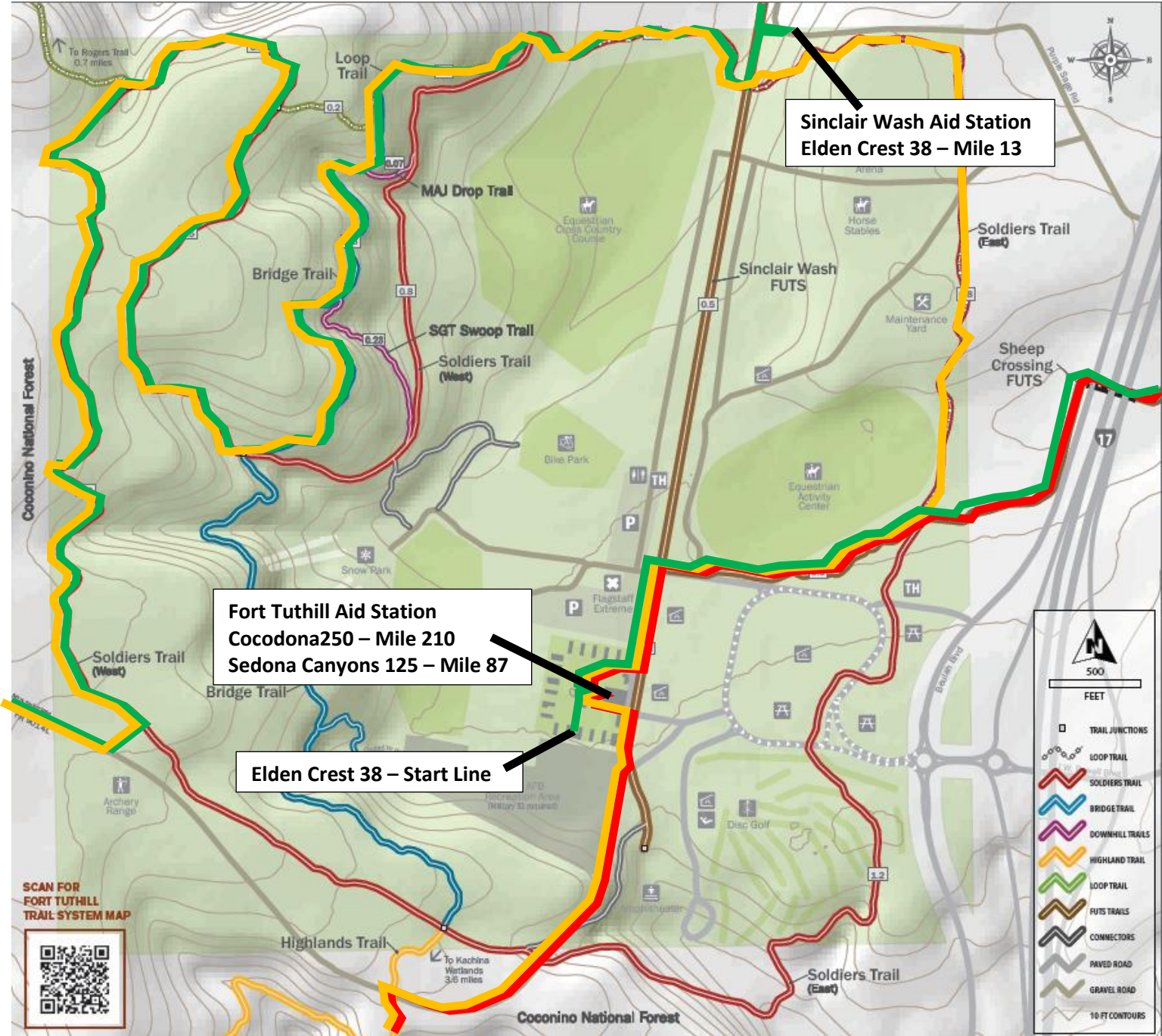




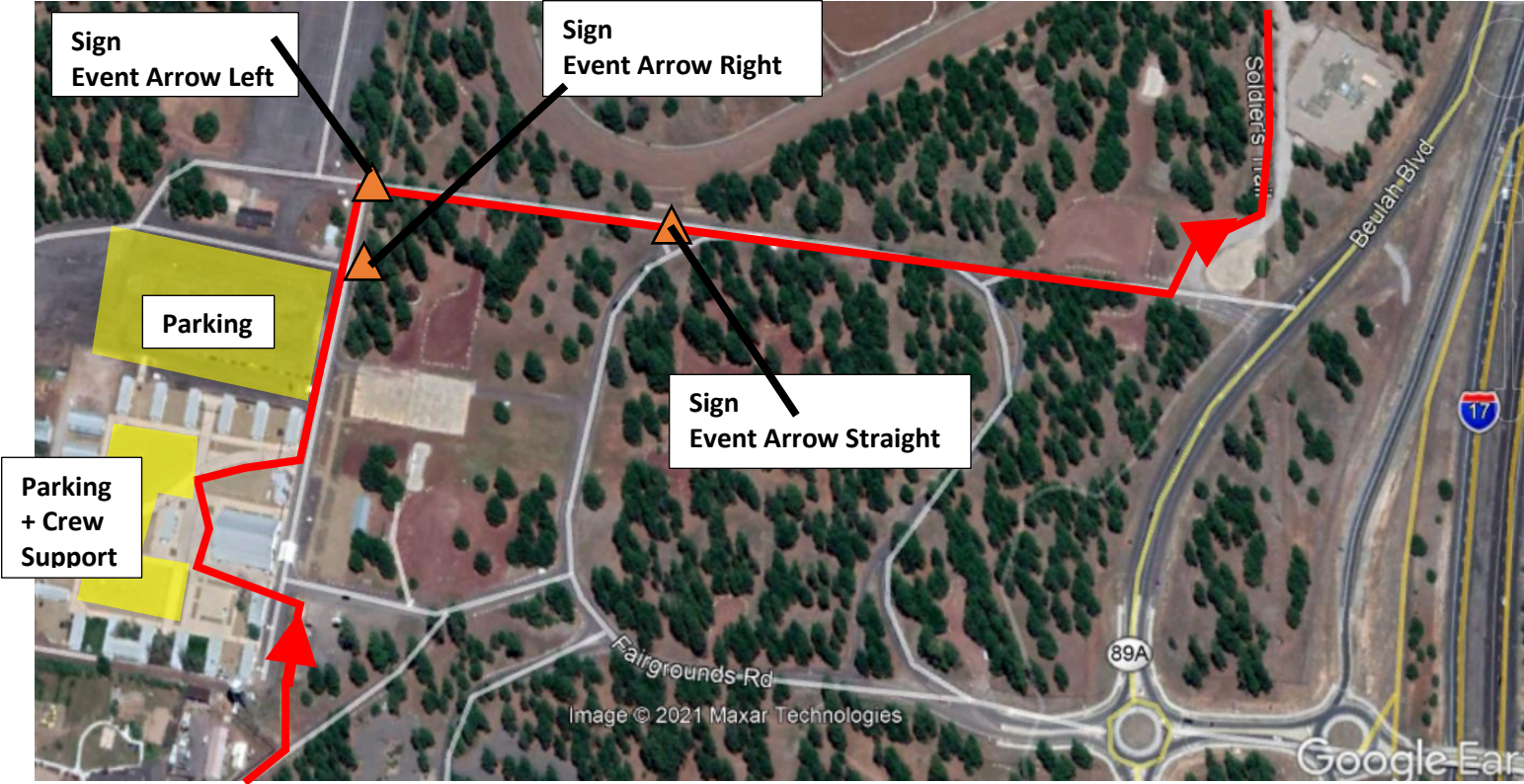


Fort Tuthill Aid Station  
Venue and Trail Use Overview

Fort Tuthill, 2446 Fort Tuthill Loop, Flagstaff

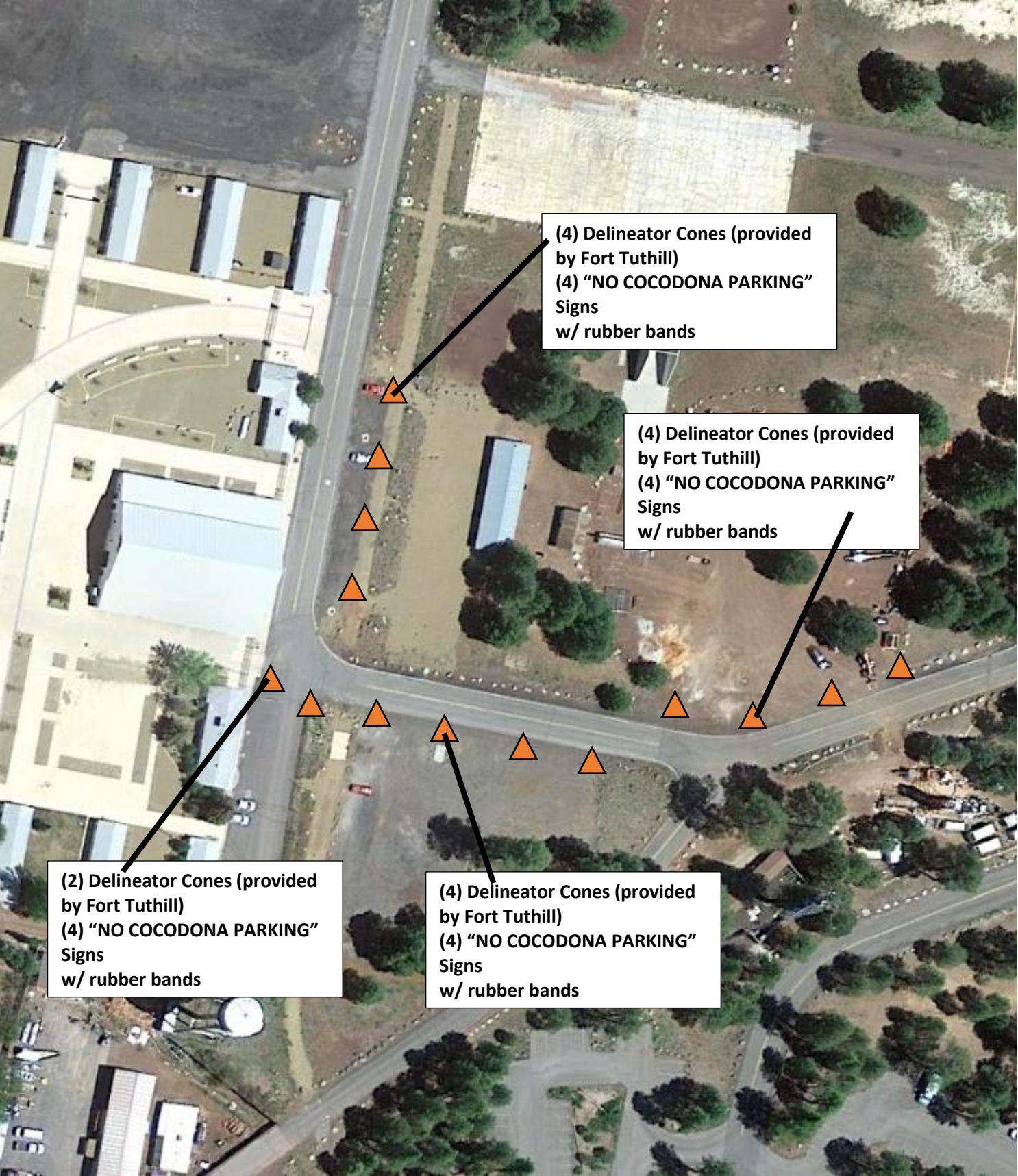


Venue Entry / Parking Signage





Fort Tuthill Aid Station  
No Parking Signage



(4) Delineator Cones (provided by Fort Tuthill)  
(4) "NO COCODONA PARKING" Signs  
w/ rubber bands

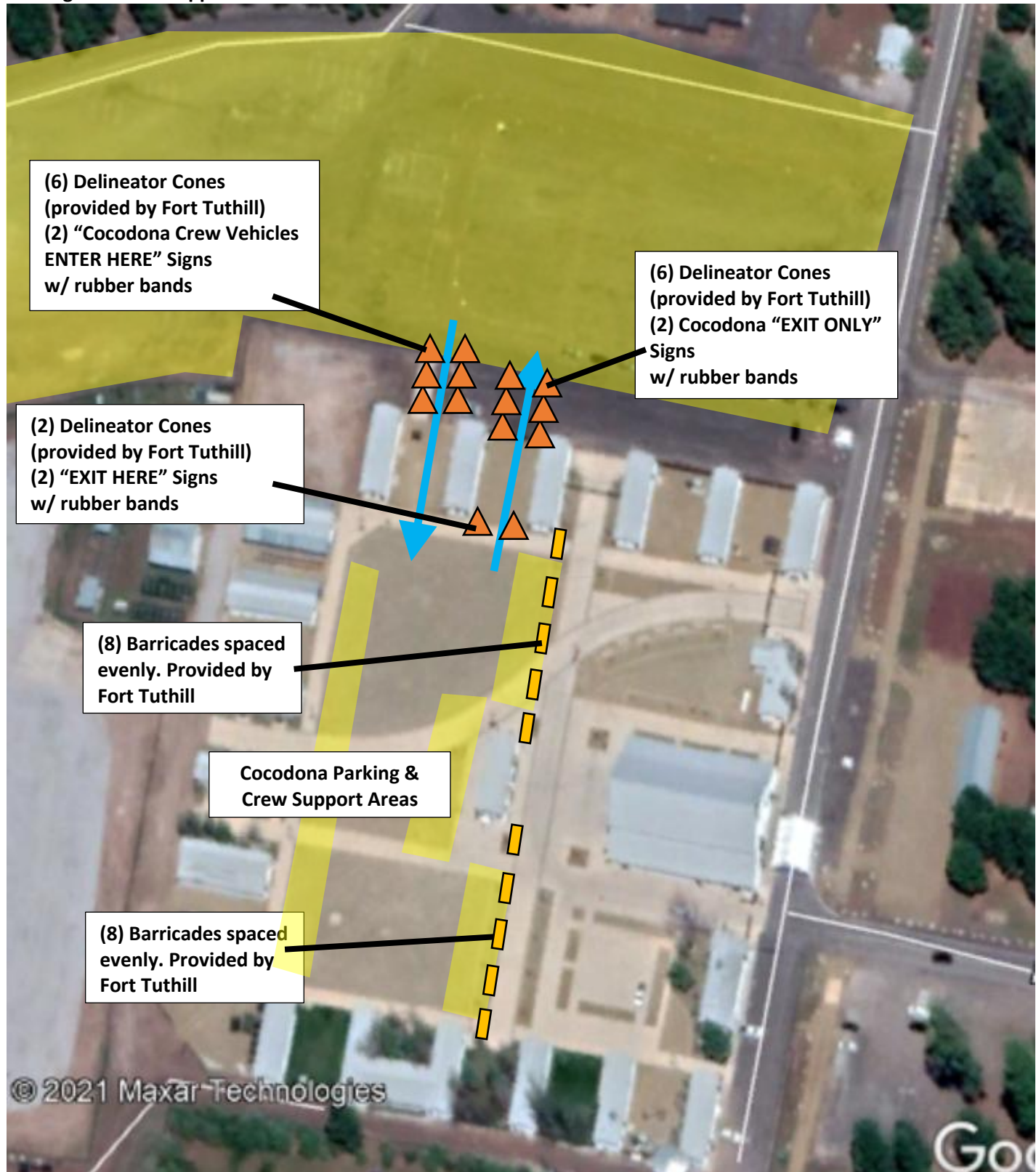
(4) Delineator Cones (provided by Fort Tuthill)  
(4) "NO COCODONA PARKING" Signs  
w/ rubber bands

(2) Delineator Cones (provided by Fort Tuthill)  
(4) "NO COCODONA PARKING" Signs  
w/ rubber bands

(4) Delineator Cones (provided by Fort Tuthill)  
(4) "NO COCODONA PARKING" Signs  
w/ rubber bands

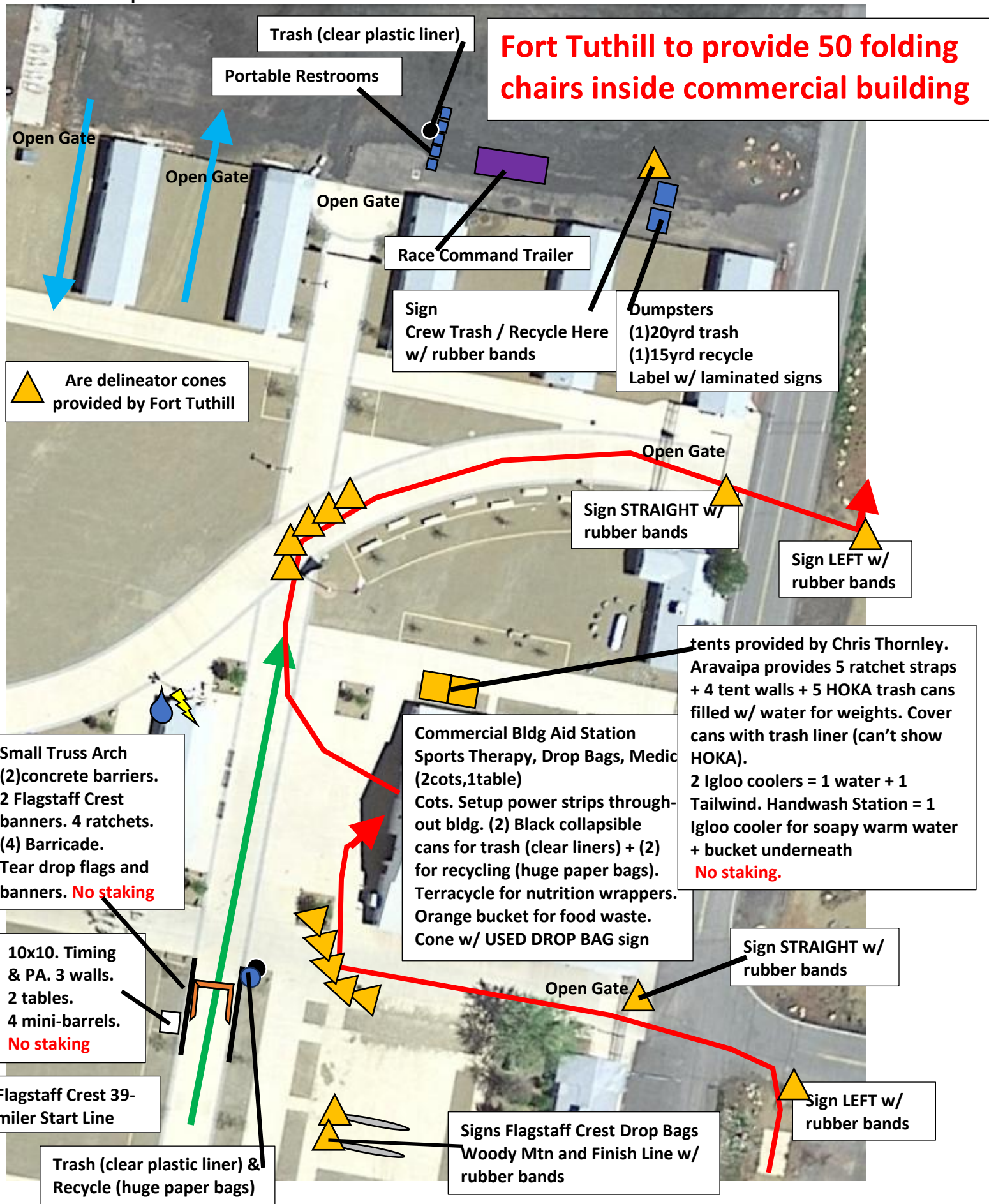


**Fort Tuthill Aid Station  
Parking and Crew Support Areas**

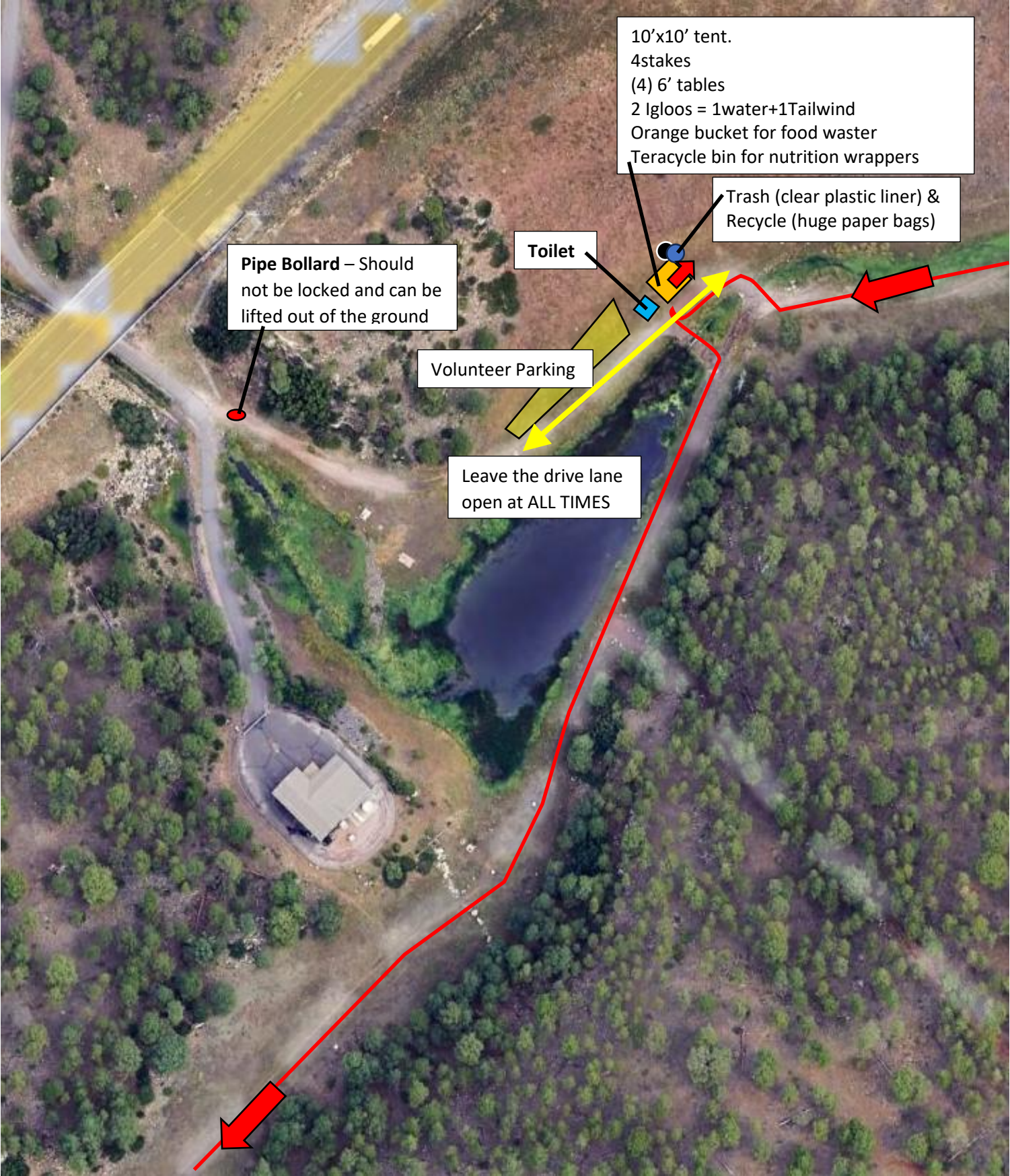




Fort Tuthill Aid Station  
Aid Station Setup







10'x10' tent.  
4stakes  
(4) 6' tables  
2 Igloos = 1water+1Tailwind  
Orange bucket for food waster  
Teracycle bin for nutrition wrappers

Trash (clear plastic liner) &  
Recycle (huge paper bags)

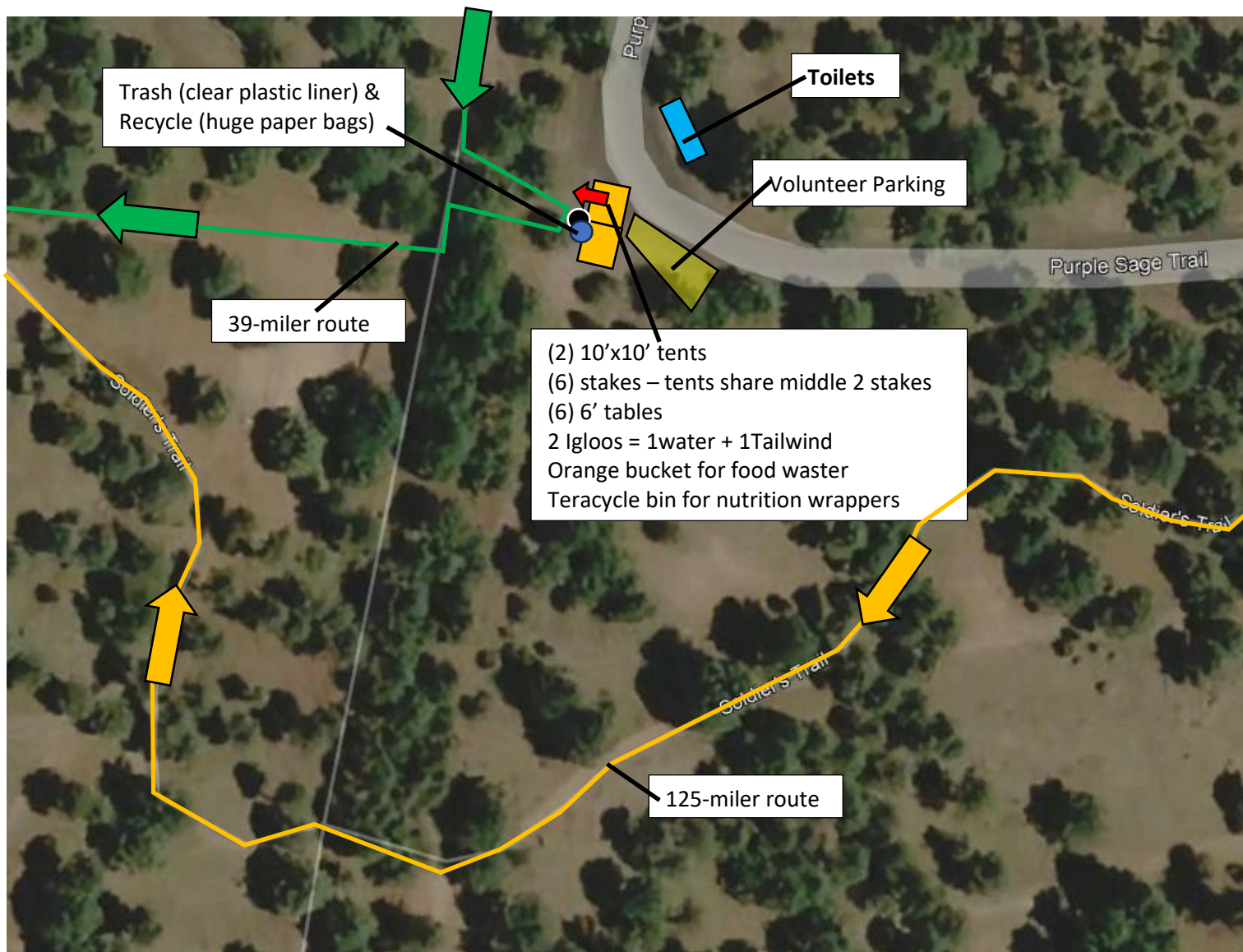
Toilet

Pipe Bollard – Should  
not be locked and can be  
lifted out of the ground

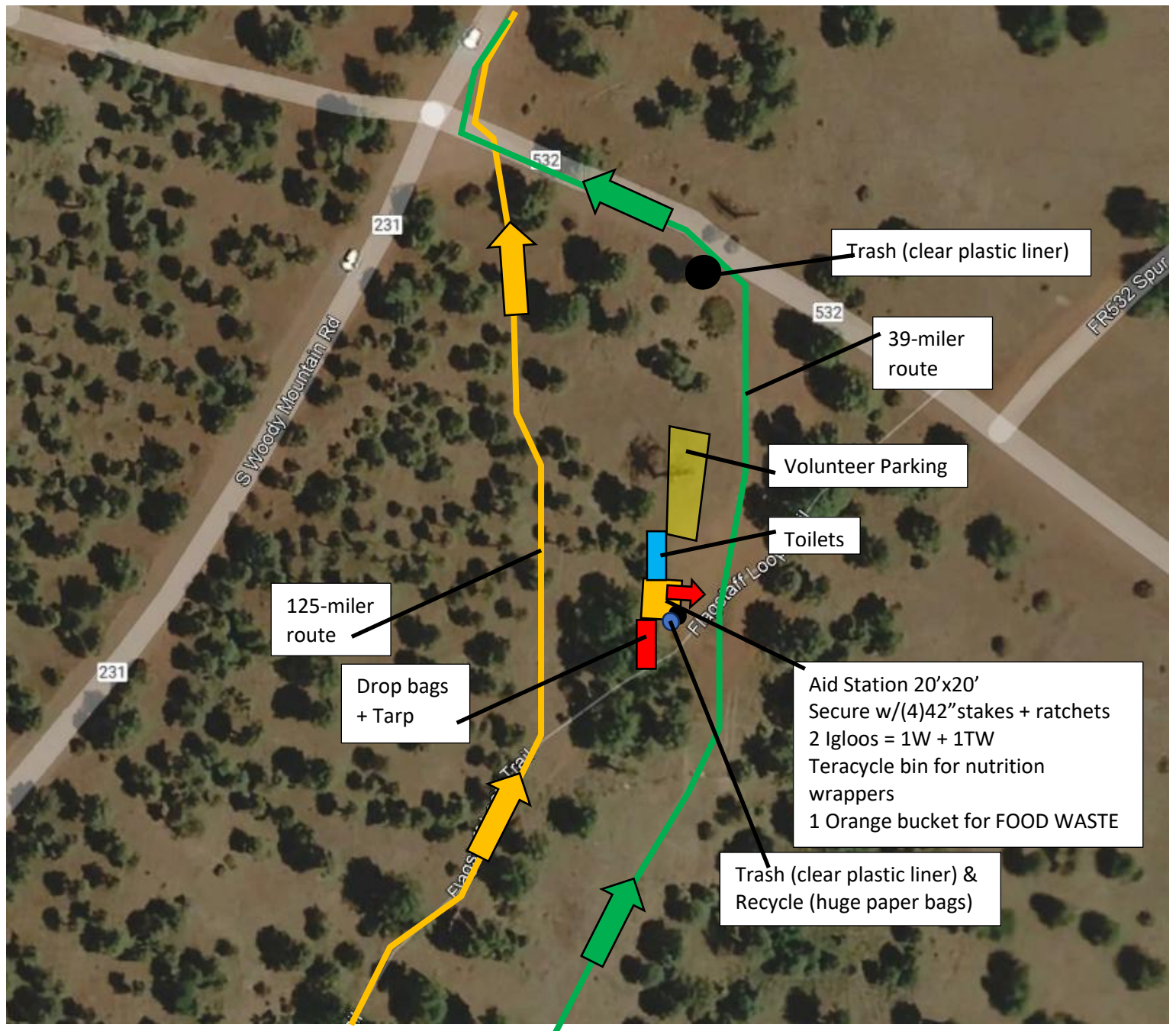
Volunteer Parking

Leave the drive lane  
open at ALL TIMES





# Woody Mountain Aid Station



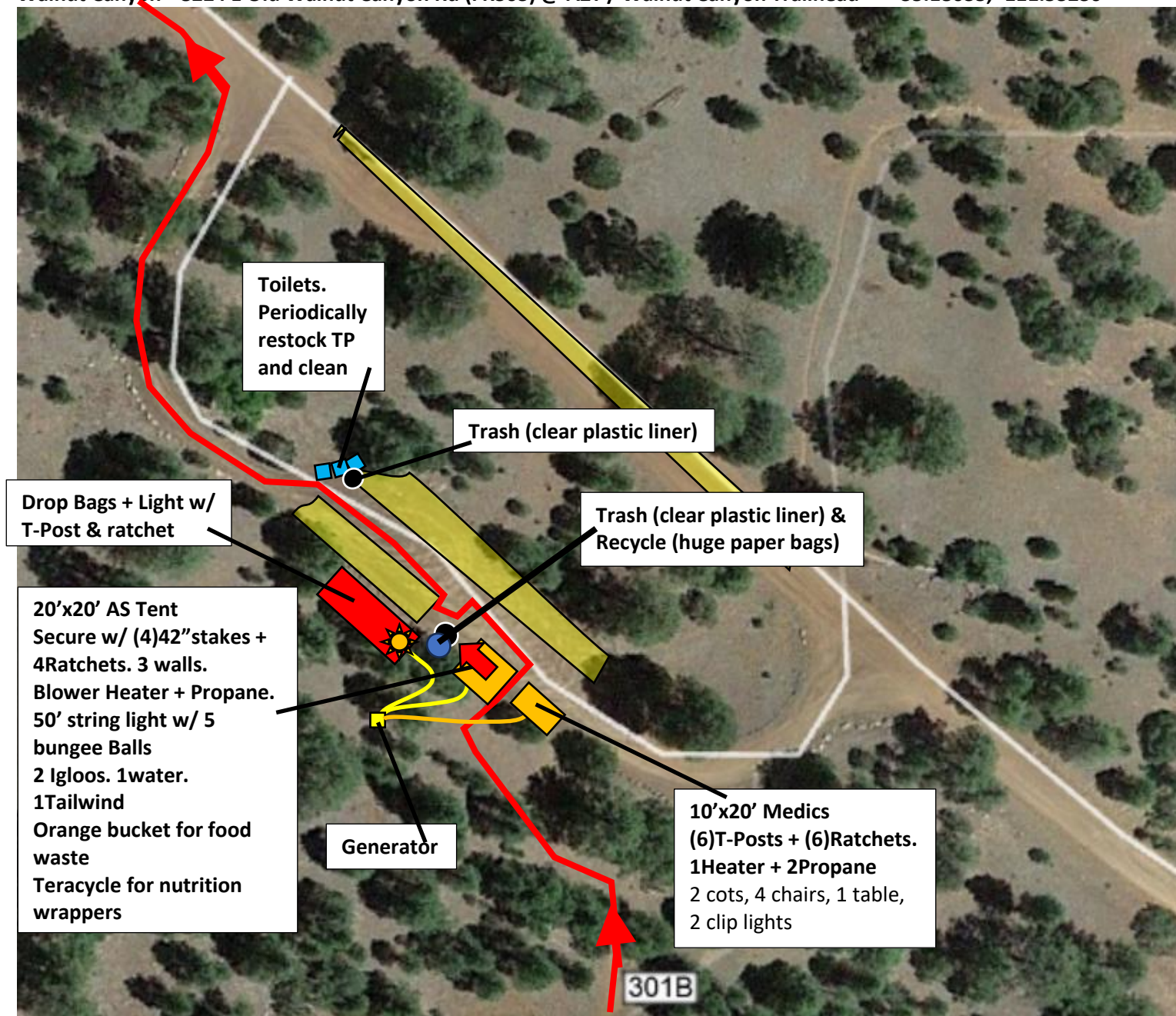




20'x20' tent + 3 walls  
 (3) 42" stakes + 4 tent weights  
 4 ratchets  
 50' string light + 5 bungees  
 8 tables  
 1 Heater + 2 propane  
 2 Igloos – 1 Water. 1 Tailwind  
 Teracycle bin for nutrition  
 wrappers  
 1 orange bucket for food waste

Medic (2) 10'x10' Tents  
 (5) walls  
 2 stakes. 3 mini barrels  
 8 ratchets  
 1 Heater + 2 propane  
 2 clip lights.  
 Heater + Propane  
 2 cots, 4 chairs  
 1 table









Trinity Heights Aid Station

Trinity Heights United Methodist Church

3600 N 4<sup>th</sup> St., Flagstaff

35.22488, -111.61233

20'x20' tent. 4 water barrels + 4 ratchets.  
3 walls. 1 Heater + 2 Propane. 50' string light w/ 5  
bungee Balls  
2 Igloos = 1water + 1Tailwind  
Orange bucket for food waste  
Teracycle for nutrition wrappers

Propane fire pit

Runner Path

Trash (clear plastic liner) &  
Recycle (huge paper bags)

Trash (clear plastic liner)

Toilets. Periodically  
restock TP and clean

100' Extension cords  
(yellow – Thick cord)  
Outlet on building

Steps down to building

Water spigot on  
building?





Alternate runner path during prisoner transfers

Water spigot

Generator

10'x20' Food.  
3WB+3Ratchet  
1Heater+1PP. 2 chairs  
50' string + 2 clip lights  
7 tables  
Food A-Frame  
Farp under grill

125+38 Drop  
bags. A-Frame  
dry erase

10'x20' Medic  
3WB+3ratchet.  
1Heater+1PP. 3cots.  
3chairs. 1table  
2 clip lights

umboTron + Arch  
(3)Hoka water  
barrels. Make sure  
to cover  
COMPLETELY

0'x20'. Sleep  
WB+6Ratchets  
Heater. 1  
propane. 5cots  
Sleep A-Frame

2)10x10. Sports Therapy. No walls.  
3 tent weights. 3 aquatainers. 8 ratchets

Big Truss Arch (4)water barrels. 2 Cocodo  
Aravaipa scrim base of arch. Banners and  
2 GOOD Garage lights for night  
10 barricades

Portable Toilets

Generator

10x10. b  
4 aquata  
tables. 2

Photo tent & weigh

Gazebo. Timing/PA.  
ratchets / bungees. 2  
lights. 1Heater+1Pro

Janji 10'x20 spa

250 Drop bags

(2)10'x10' Merch. 8 tent weight  
8 ratchets. 6 walls. 3 tables. 1 ch  
1 clip light

Barricade

Chris Hawthorn

Cord tray

- Periodically haul trash to Fort Tuthill as needed and at end of event. Not allowed to use the dumpsters onsite
- Periodically restock TP and clean toilets
- (2) Black collapsible cans for trash + (2) for recycling. Terracycle for Gu/packaging. Not allowed to use the cans onsite.
- Quiet hours 10pm-9am
- Overnight security on Wednesday 8pm-8am Thursday morning.
- Place tarp on concrete beneath grill